

Installations- & Konfigurationsanleitung: *OpenConnect VPN*

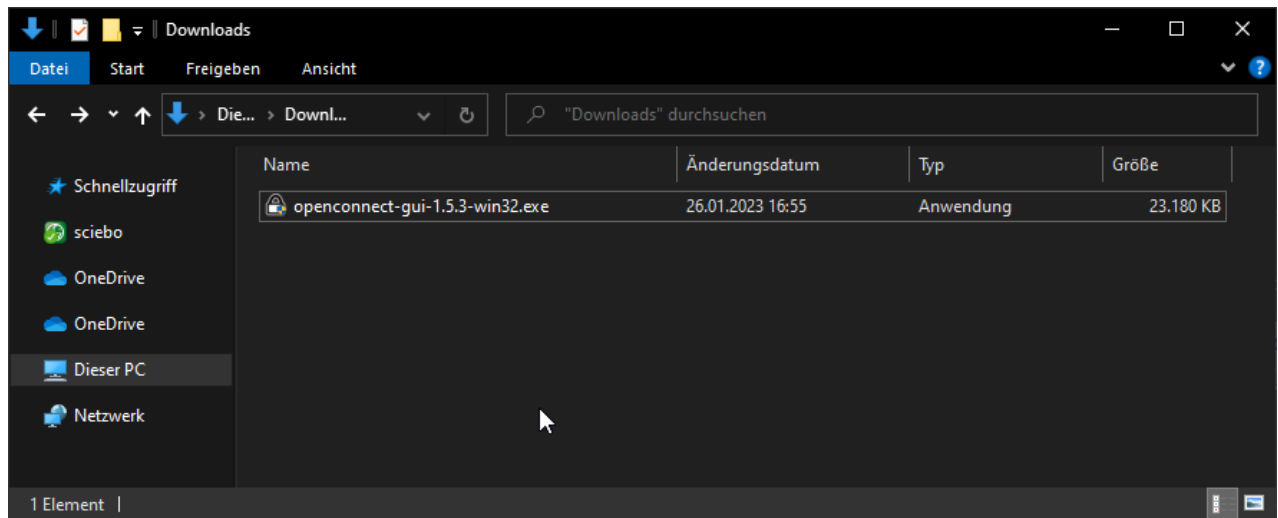
Microsoft Windows 10

- 1) Download the OpenConnect VPN Client for Windows. You can find the current version as download here: <https://github.com/openconnect/openconnect-gui/releases>

Directlink for OpenConnect VPN v1.5.3 for Windows:

<https://github.com/openconnect/openconnect-gui/releases/download/v1.5.3/openconnect-gui-1.5.3-win32.exe>

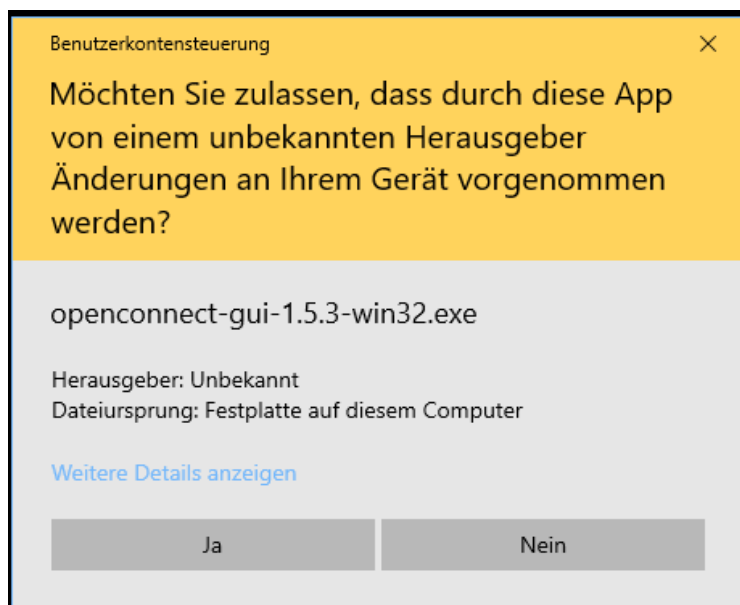
- 2) After the download, start the installation of the VPN client by double-clicking the file.



- 3) Confirm the individual installation windows by clicking on "Okay" or "Next" and install the OpenConenct VPN Client with the specified default settings.

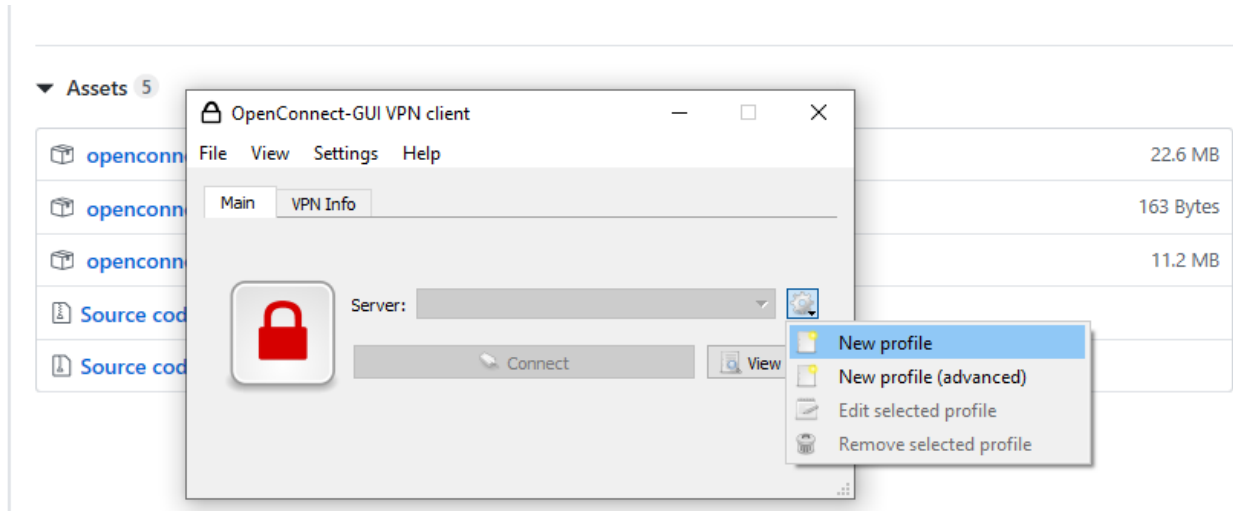
After the installation is complete, the OpenConnect client opens by default.

Since the VPN client can only be started with administrative rights, confirm the following window by clicking on "Yes" or enter the user data of the administrator account of your PC:

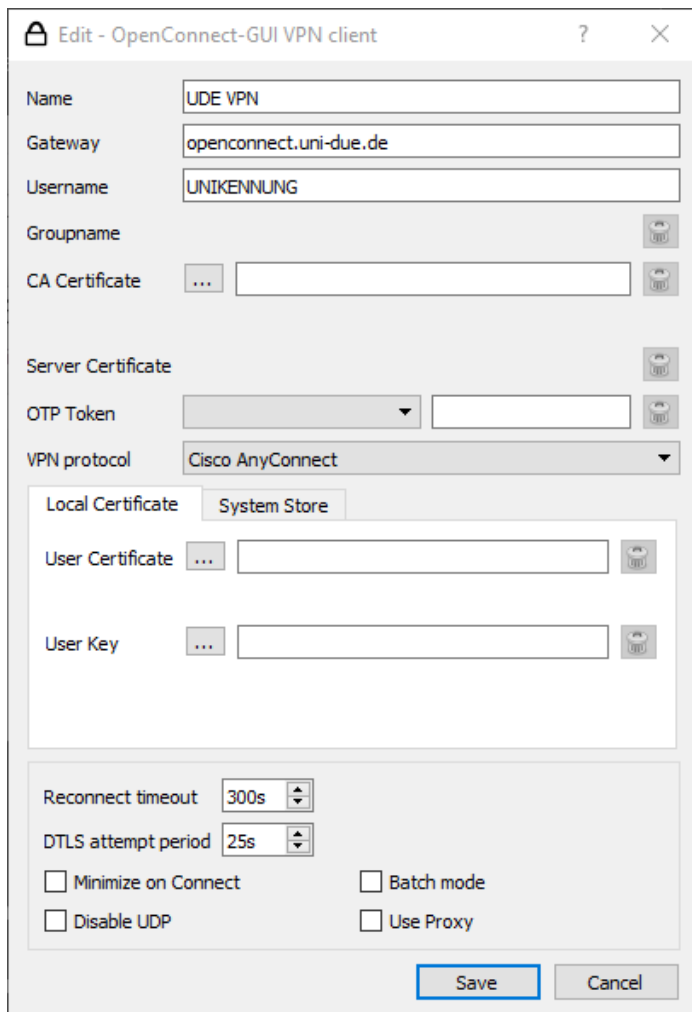


Installations- & Konfigurationsanleitung: *OpenConnect* VPN Microsoft Windows 10

4) After the program window opens, click on the gear icon and then on “*New profile (advanced)*”.



5) The settings for the VPN connection must be entered as follows and finally saved by pressing “*Save*”:

The screenshot shows the 'Edit - OpenConnect-GUI VPN client' window. The settings are as follows:
Name: UDE VPN
Gateway: openconnect.uni-due.de
Username: UNIKENNUNG
Groupname: (empty)
CA Certificate: (empty)
Server Certificate: (empty)
OTP Token: (empty)
VPN protocol: Cisco AnyConnect
Local Certificate: System Store
User Certificate: (empty)
User Key: (empty)
Reconnect timeout: 300s
DTLS attempt period: 25s
Minimize on Connect:
Batch mode:
Disable UDP:
Use Proxy:
Buttons: Save, Cancel

Name:

Bezeichnung für die VPN-Verbindung;
zum Beispiel: „UDE VPN“

Gateway:

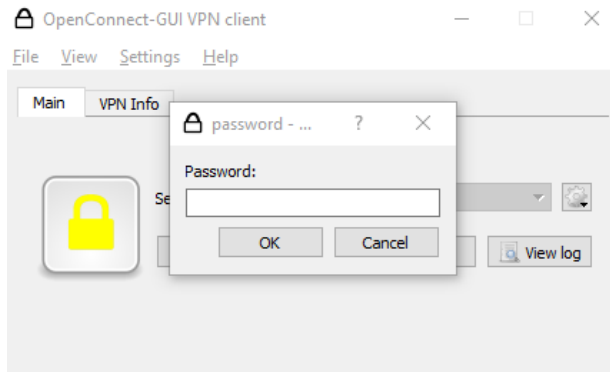
openconnect.uni-due.de

Username:

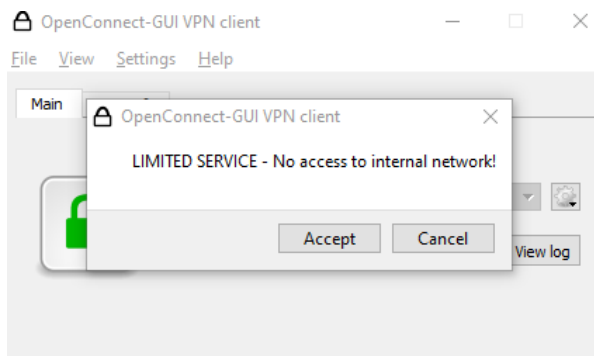
your UNIKENNUNG / Uni ID

Installations- & Konfigurationsanleitung: *OpenConnect* VPN Microsoft Windows 10

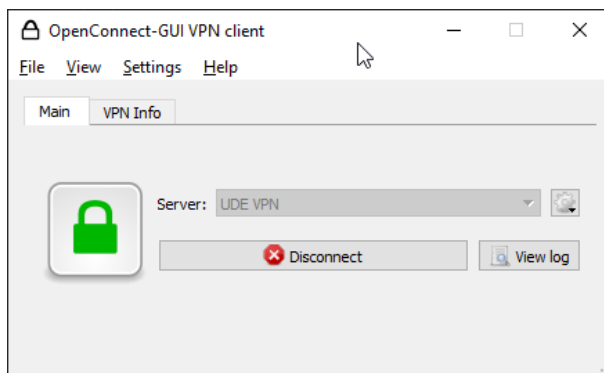
- 6) Finally, press the *"Connect"* button and, when prompted, enter the password of your Unikennung and confirm with *"OK"*:



- 7) You may see the following message. Please continue here with *"Accept"*.



- 8) The connection is now established, and the lock icon changes color from red to green.



You are now connected to the VPN and can access the available resources.

- 9) To disconnect the VPN connection, click on *"Disconnect"* in the OpenConnect window.