

Welcome!

First contact points



Centre for Information and Media Services

The Center for Information and Media Services (CIM) is a central institution of the University Duisburg-Essen. It operates the network of the university, which offers connection to the Internet and provides central services for your studies as well as multimedia equipment.

A comprehensive overview of the services of the CIM including opening hours and contact points can be found on our web site:

www.uni-due.de/zim/

We wish you a good start for your studies!

Hotline

Phone Duisburg 0203-379-2221

Phone Essen 0201-183-4444

E-Mail hotline@uni-due.de

e-Point

Campus Duisburg (Entrance hall of the library)
Building LK

Phone 0203-379-4242

Campus Essen (Entrance hall of the library)
Building R09

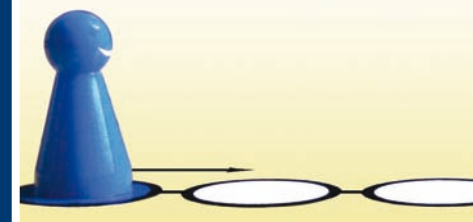
Phone 0201-183-4444

Address

Campus Duisburg
Forsthausweg 2
47048 Duisburg

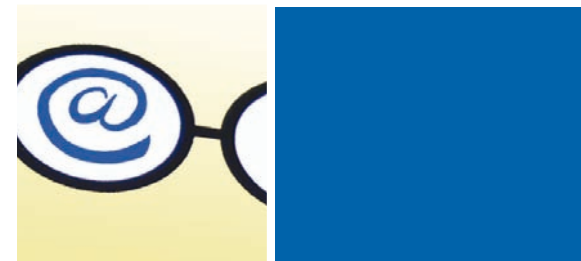
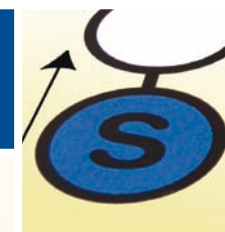
Campus Essen
Schützenbahn 70
45127 Essen

© 2011 University of Duisburg-Essen
Published by CIM (Center for Information and Media Services)
1st english edition 08.2011



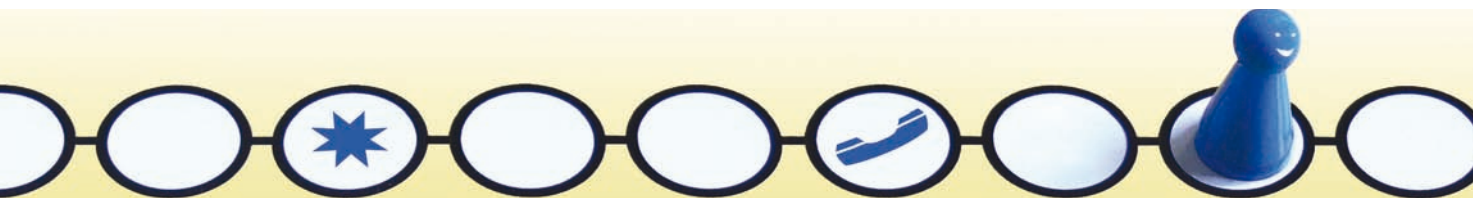
ZiM

Centre for Information and Media Services



UNIVERSITÄT
DUISBURG
ESSEN

Open-Minded



Nothing works without your ID

All students receive a personal User ID and an email address on registration. Once you have unlocked this User ID via benutzerverwaltung.uni-due.de/portal/, you can use the electronic services of the university and Internet services. Note that the university sends information only to this university e-mail address!

Uni unlimited

You have access to the university computer network, Internet and services via LAN, WiFi or dial-up access. At various locations there are public computer labs, scanners and printers.

Some free time left?

CIM offers a wide range of courses, for example on Office, Photoshop, Flash, video and audio recording and editing. For self-study you can purchase inexpensive computer manuals and brochures. See the latest information on our web site.

Schedule online

Put together your personal schedule online under www.lsf.uni-due.de. online zusammen. Register for your exams - an increasing number of them online - or check your student status and your grades.

PC problems? Call our hotline!

Our hotline takes trouble messages concerning your equipment at the university by phone or web form and provides a quick solution.

First Aid at the e-Point

You have problems with your User ID or wish to register for a course? A first point of contact for many problems or questions about our services is the e-Point at the entrance of the libraries in LK and R09. Between 10 and 12 a.m. there is also someone from the user management to help you in issues relating to your User ID or e-mail address. For answers to many other questions visit the FAQ on our website.

Inexpensive software or campus licenses

Über Campus- und Landeslizenzverträge können Sie Software kostenlos bzw. preisgünstiger nutzen. Dazu gehört auch die Antivirensoftware Sophos.

More than iPod and cell phone

For your studies you may access a media library available with specialist TV recordings, audio and video materials. To enhance your media literacy, you can create your own video and audio production. The student media work staff will help you to realize your projects.

Take advantage of electronic learning platforms such as Moodle or BSCW for groupwork. Here you can work together on documents, exchange ideas through discussion forums with other members of your group or participate in tests.

Connect to the world by wireless

There are many free WiFi access points on campus.

