



Centre for Information and Media Services

The Centre for Information and Media Services (CIM) is a central service unit of the University of Duisburg-Essen. It controls the data network of the university, provides Internet connectivity as well as central services to support your studies, for example with multimedia equipment.

To get a general overview of the services of the CIM and its hours of business, visit our websites:

www.uni-due.de/zim

Hotline

Mo-Fr 8-20 hrs
Phone (DU) 0203-379-2221
Phone (E) 0201-183-4444
E-Mail hotline.zim@uni-due.de

e-Point

Mo-Fr 9-19 hrs
Phone (DU) 0203-379-4242
Phone (E) 0201-183-4444
Campus Duisburg, Building LK (Library) Groundfloor
Campus Essen, Building R09 (Library GW/GSW) Groundfloor

Address

Campus Duisburg
Forsthausweg 2
47048 Duisburg

Campus Essen
Schützenbahn 70
45127 Essen



© 2013 University of Duisburg-Essen
Published by CIM (Centre for Information and Media Services)
third english edition



UNIVERSITÄT
DUISBURG
ESSEN

Open-Minded

ZiM

Centre for Information and Media Services

WiFi at UDE over Eduroam



ZiM

Zentrum für Informations- und Mediendienste

UNIVERSITÄT
DUISBURG
ESSEN

Open im Denken

Posted signs indicate where WiFi access is available.

WiFi

Where can WiFi be used?

The CIM is currently extending its area-wide WiFi (Wireless Local Area Network) at both locations of the university. All members of the university can use this wireless network for free.

On this website you can find areas where WiFi is already available:

www.uni-due.de/zim/quick/7

How can WiFi be used?

The UDE belongs to the European Eduroam Confederation (www.eduroam.org). It allows students and employees (of a member university) to use an encrypted network access for WiFi without additional registration during their stay at the university (e.g. at UDE). Almost all european countries are represented in Eduroam. There are also participating organizations outside Europe, e.g. Canada and the Asian Pacific Region. The great advantage of Eduroam is, that once you have confi-

gured WiFi for your organization, you can use it at all participating organizations without the need of a reconfiguration.

For further information visit our website:

www.uni-due.de/zim/quick/40

Configuration

Eduroam can be used with all recent Windows versions (XP, Vista, 7), on Mac (recent versions), Linux and smartphones (iPhone, Android). The operating system has to support the authentication procedure EAP-TTLS-PAP or EAP-PEAP-MS-CAPv2.

For authentication you need to have your UserID.

For detailed instructions for Windows, Mac, iPhone or other smartphones visit our website:
www.uni-due.de/zim/quick/65

If you have any problems please contact our e-point team on both campuses.

Access Data

If you are already familiar with the configuration of wireless networking, you can find the required information here:

SSID: eduroam

Network Authentication: WPA2 (or WPA)

Data encryption: AES (or TKIP)

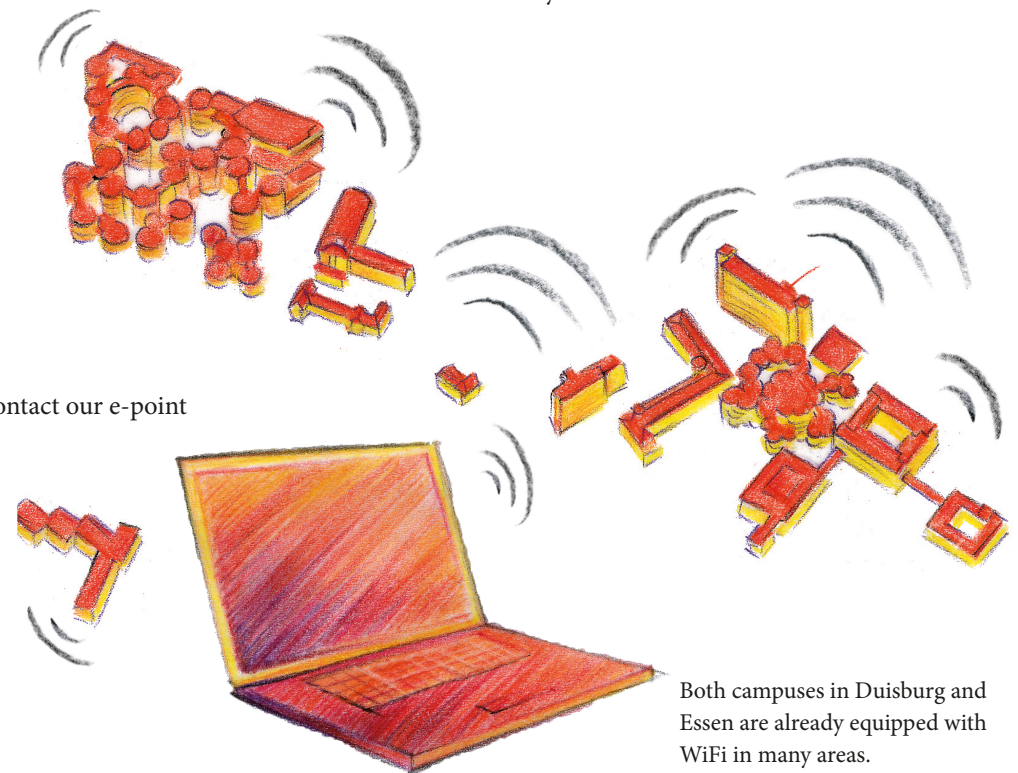
Login/UserID: < UserID>@uni-duisburg-essen.de

Password: <password of UserID>

Domain: uni-duisburg-essen.de

Authentication procedure: EAP-TTLS-PAP

Guests from other universities have to specify the domain of their university.



Both campuses in Duisburg and Essen are already equipped with WiFi in many areas.