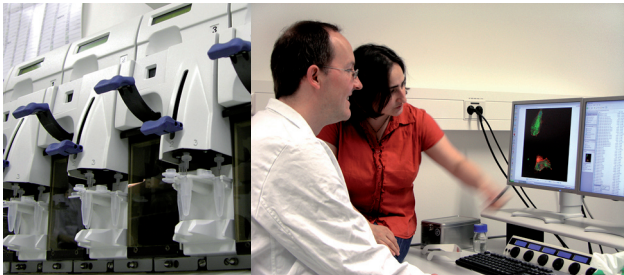


## Education

The ZMB hosts several educational programmes in biomedical research. The bachelor- and master schemes in "Medical Biology" prepare for a scientific career in the biomedical field and graduates have a choice of various PhD programmes.

B.Sc. Medical Biology  
M.Sc. Medical Biology  
M.Sc. Biological and Medical Chemistry

PhD Programme: GK 1431 (Genetics)  
PhD Programme: GK 1045 (Immunology)



## Advisory Board

Prof. Dr. Dr. h.c. (mult.) Robert Huber  
Nobel Laureate for chemistry, 1988  
*Max-Planck-Institut für Biochemie, Martinsried*

Dr. Franzpeter Bracht  
*GlycoTope GmbH, Berlin*

Prof. Dr. Dr. h.c. Rolf Kinne  
*Max-Planck-Institut für Molekulare Physiologie, Dortmund*

Dr. Detlef Wollweber  
*Bayer Innovation GmbH, Düsseldorf*



## Centre for Medical Biotechnology

[www.uni-due.de/zmb](http://www.uni-due.de/zmb)

**Chairman**  
Prof. Dr. Michael Ehrmann

**Managing Director**  
Dr. Lydia Didt-Koziel

**ZMB**  
Universität Duisburg-Essen  
45117 Essen

Tel.: (+49) 201 183 - 3670  
Fax: (+49) 201 183 - 3672

[zmb@uni-due.de](mailto:zmb@uni-due.de)

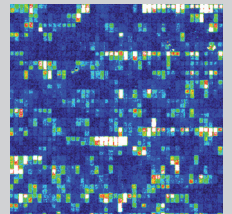
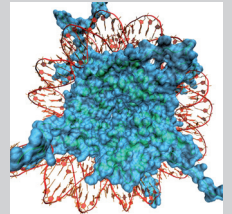


UNIVERSITÄT  
DUISBURG  
ESSEN

 **Universitätsklinikum Essen**  
Anstalt des öffentlichen Rechts



## Centre for Medical Biotechnology



UNIVERSITÄT  
DUISBURG  
ESSEN

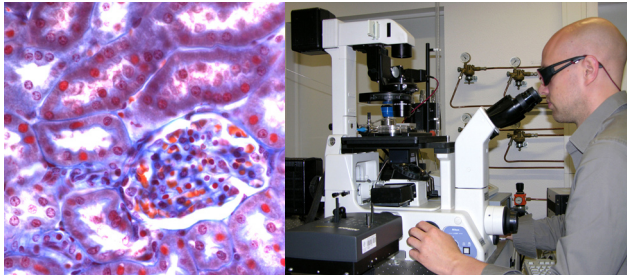
 **Universitätsklinikum Essen**  
Anstalt des öffentlichen Rechts

## The Centre for Medical Biotechnology (ZMB)

*Strong in basic and applied research*

The ZMB is an interdisciplinary scientific centre of the University Duisburg-Essen, integrating medical research at the University Hospital and natural sciences at the Campus.

The mission of the ZMB is to elucidate molecular mechanisms of disease and to turn this knowledge into medical progress. Currently, the ZMB is active in key areas of basic biomedical research, and in the translation of scientific knowledge into novel drugs and diagnostic tools. Accordingly, the 40 groups of the ZMB combine basic and applied biomedical sciences. Research is structured into four interdisciplinary programmes with numerous links between these programmes.



### Aims of the ZMB

- Combining and supporting biomedical research at the University Duisburg-Essen. Conducting translational research projects.
- Promotion of joint projects between basic science, biotechnology, pharmaceutical- and medical engineering and clinics.
- Impulses for the economic development of the Ruhr-Area
- Educating young biomedical scientists

## Research

Interdisciplinary research that crosses traditional boundaries of the fields of biology and medicine is of particular interest. Research is structured within four interdisciplinary research programmes covering the three central research areas "Cardiovascular System", "Oncology" and "Transplantation" of the University Hospital.

### Research Programmes

- Oncology
- Immunology, Infectious Diseases and Transplantation
- Genetics, Developmental, Molecular and Cell Biology
- Biomolecular Structure and Function

### Consortia (selected)

- SFB/TR 60 Mutual interaction of viruses with cells of the immune system: from fundamental research to immunotherapy and vaccination
- GRK 1045 Modulations of Host Cell Functions to treat Viral and Bacterial Infections
- GRK 1431 Transcription, Chromatin Structure and DNA Repair in Development and Differentiation
- EU 6th FP Cancer research project: European Embryonal Tumor Pipeline
- BMBF Corus: novel approaches to HIV Diagnosis
- BMBF Structure based design of modular MRI Probe Molecules for the highly sensitive detection of metastases
- BMBF Network Project Preeclampsia: Development of a diagnostic molecular marker for early prediction of preeclampsia and intrauterine growth restriction
- GCA German Cancer Aid: Competence Network Malignant Lymphomas - Molecular mechanisms in malignant lymphomas

## Facilities



A dynamic, stimulating and collaborative research environment includes state of the art facilities and more than 300 highly educated personnel. These facilities offer a broad spectrum of modern biomedical methods and technologies and are open for ZMB-members but also for external researchers.

- Animal Models of Diseases

- Imaging

- Pathology, Tissue Library

- Genomics, Proteomics, Structure Biology

- Drug Discovery, Toxicology, Clinical Trials

