

TOPICAL REVIEW

Review on light management by nanostructures in chalcopyrite solar cells

To cite this article: M Schmid 2017 *Semicond. Sci. Technol.* **32** 043003

View the [article online](#) for updates and enhancements.

You may also like

- [Influence of substrate and its temperature on the optical constants of \$\text{CuIn}_{1-x}\text{Ga}_x\text{Se}_2\$ thin films](#)
G Yin, P Manley and M Schmid
- [Reduced potential fluctuation in a surface sulfurized \$\text{Cu}\(\text{InGa}\)\text{Se}_2\$](#)
Shinho Kim, Taketo Aihara, Jiro Nishinaga et al.
- [Analysis for non-radiative recombination and resistance loss in chalcopyrite and kesterite solar cells](#)
Masafumi Yamaguchi, Hitoshi Tampo, Hajime Shibata et al.



The Electrochemical Society
Advancing solid state & electrochemical science & technology

UNITED THROUGH SCIENCE & TECHNOLOGY

248th ECS Meeting Chicago, IL October 12-16, 2025 Hilton Chicago



Science + Technology + YOU!

Register by
September 22
to **save \$\$**

REGISTER NOW

Topical Review

Review on light management by nanostructures in chalcopyrite solar cells

M Schmid

Helmholtz-Zentrum Berlin, Nanooptische Konzepte für die PV, Hahn-Meitner-Platz 1, D-14109 Berlin, Germany

Freie Universität Berlin, Department of Physics, Arnimallee 14, D-14195 Berlin, Germany

E-mail: martina.schmid@helmholtz-berlin.de

Received 14 February 2016, revised 5 December 2016

Accepted for publication 19 December 2016

Published 13 March 2017

**Abstract**

Light management has gained wide interest for various types of solar cells. This paper reviews the application of nanostructures for light management to chalcopyrite (CIGSe) type solar cells. Firstly, the relevance of light management for CIGSe solar cells will be introduced and concepts of nanostructures for absorption enhancement discussed. The development of ultra-thin CIGSe solar cells and examples for nanoparticle fabrication techniques together with their chances and challenges for application to CIGSe will be presented. Particular attention will be paid to nanostructures that have been applied to CIGSe solar cells, revealing many theoretical and some experimental results. Metallic and dielectric nanostructures as well as intrinsic nanotextures will be covered. For the future, combined considerations of optical and electrical properties will gain in importance.

Keywords: light management, chalcopyrite solar cells, nanostructures, ultra-thin CIGSe, Cu(In,Ga)Se_2 , absorption enhancement, photonic concepts

(Some figures may appear in colour only in the online journal)

1. Introduction

Global society is facing a growing demand for energy. With it come risks of global warming and limited amounts of fossil resources, which make it necessary to exploit renewable energy sources on a grand scale. Photovoltaics, the direct conversion of sunlight into electricity, offers great potential for exploiting the largest renewable energy source we have—the Sun. The key challenge in photovoltaics is finding technology that provides high conversion efficiency at a low cost. In addition, in the long term there is the important concern of the availability and cost of rare materials, especially when it comes to large terawatt installations.

Thin film solar cells are a promising alternative to bulk silicon wafer-based devices, as they allow to reduce material consumption and manufacturing cost and additionally enhance flexibility for roll-to-roll production on bendable substrates. Amongst the thin film technologies, perovskites

have recently emerged as a very promising high efficiency material reaching well beyond 20%, yet they remain subject to challenges in stability. Kesterites offer benefits of containing non-toxic, abundant and cheap materials although the efficiencies achieved up to now stayed below 15%. Chalcopyrites, in particular Cu(In,Ga)Se_2 (CIGSe), being investigated for several decades already, have proven particularly successful with a steady increase in stabilized record efficiency, recently reaching 22.6% [1]. Not just is CIGSe a direct band gap material but it also offers excellent electronic properties and high tolerance against environmental influences like varying illumination intensity or even cosmic radiation [2]. An additional short energy payback time makes CIGSe solar cells predestined for large scale deployment—yet the scarcity and supply risk of contained elements indium and gallium [3] may become a limiting factor for production on the terawatt scale. Therefore, continued minimization of absorber thickness is desirable, simultaneously bringing

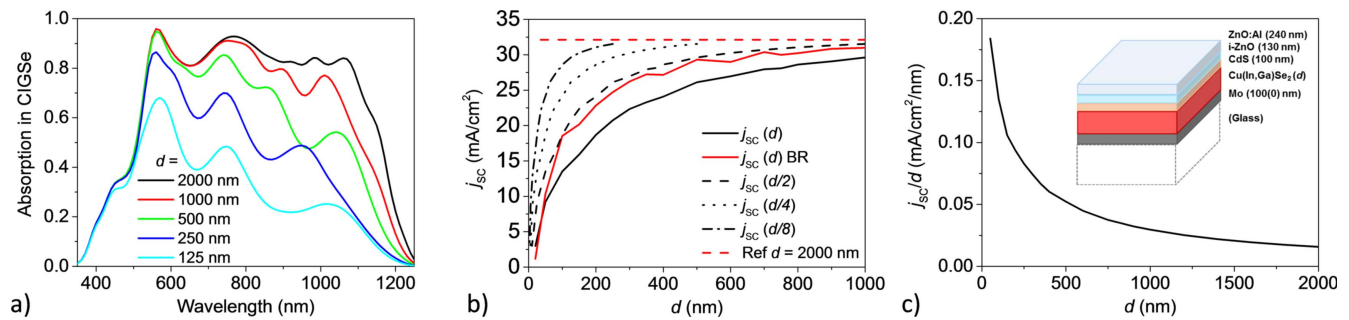


Figure 1. (a) Absorption of a CIGSe solar cell for various absorber thicknesses d ; (b) resulting short circuit current density j_{sc} , j_{sc} with back reflector BR, j_{sc} for d replaced by $d/2$, $d/4$ and $d/8$ as well as the reference value for the 2000 nm absorber case; (c) short circuit current density per thickness; the inset shows the simulated device structure, glass is added as a dashed block for reference to the experimental structure only where Mo would be 1000 nm thick.

further reduction in material cost and increased production throughput. With a thinner absorber comes however the challenge of incomplete light absorption which can be tackled by applying nano-optical concepts for light localization inside the absorber layer, thus enhancing absorption.

Although numerous publications exist showing the application of nanostructured designs to amorphous and microcrystalline silicon, organic and dye-sensitized solar cells, the topic has only recently started to attract significant attention in the field of CIGSe. A direct transfer of previously investigated structures to CIGSe is not always straight forward due to the differences of CIGSe solar cell structure and fabrication technologies as compared to other devices [4]. This paper reviews the current status of applying nanostructures for light management in CIGSe solar cells. Section 2 is devoted to investigating the need for light management to CIGSe and opposes macroscopic approaches to nano-optical concepts. The following section 3 summarizes the technologies for CIGSe solar cell and nanoparticle fabrication since this background will reveal us the requirements for combined production processes. The section also includes a review on the development of ultra-thin CIGSe solar cells which are a basis for the exploitation of nano-optical concepts. In section 4 the various approaches of nanostructures for absorption enhancement of ultra-thin chalcopyrite solar cells are assembled from literature. They range from intrinsic texturing over metallic nanoparticles to dielectric nanostructures and finally point contact schemes addressing electrical in addition to optical challenges. In future, nanostructures combining optical and electrical properties for improving the performance of ultra-thin CIGSe solar cells will gain increased importance.

2. Light management in CIGSe solar cells

2.1. Need for light management in CIGSe

As in every photovoltaic device the ambition of complete light absorption inside the absorber layer is hindered by losses in reflection, parasitic absorption of contact layers and transmission originating from incomplete absorption of the absorber itself. For CIGSe the reflection of the bare interface

air/CIGSe would be 24% at a wavelength $\lambda = 800$ nm. By adding the standard front layer stack of CdS/i(ntrinsic)-ZnO/ZnO:Al with typical thicknesses of 100 nm/130 nm/240 nm the reflection can be reduced to 6% at $\lambda = 800$ nm. These and the following calculations were performed using the transfer matrix method and optical constants as derived from transmission/reflection measurements of realistic thin films [5]. Further reduction of reflection as well as of parasitic absorption can be achieved by layer thickness optimization and material adaptation which we will come back to in the next sub-section. For the typical CIGSe absorber thickness of 2–3 μm incomplete absorption generally does not pose any limitation in case of good material quality, yet if the thickness is reduced to below 1 μm significant losses occur. Then also imperfect reflection and parasitic absorption of the back contact, which is commonly made from Mo, start to play a major role.

Figure 1(a) shows the calculated absorption of a typical Mo/CIGSe/CdS/i-ZnO/ZnO:Al solar cell stack as a function of wavelength for various absorber thicknesses. (Details of the CIGSe solar cell structure will be discussed in section 3.1.) Clearly, for the thinner absorbers losses emerge which are most pronounced close to the band gap around 1200 nm and extend more and more towards shorter wavelengths as the thickness d decreases. The solid black line in figure 1(b) plots $j_{sc}(d)$ and reveals the decrease in short circuit current density with thickness reduction. Despite the observed strong drop, the ratio j_{sc}/d actually keeps on increasing down to $d = 50$ nm as shown in figure 1(c). This improvement of short circuit current density per thickness is the reason why thinner absorbers are favorable for material saving purposes. In order to overcome losses due to incomplete absorption, mechanisms to enhance the path length of light inside the absorber are required. Simulating a perfect reflector underneath the CIGSe layer leads to the red curve shown in figure 1(b). It closely matches $j_{sc}(d/2)$, the current curve plotted for d replaced by $d/2$. Further shown are $j_{sc}(d/4)$ and $j_{sc}(d/8)$ revealing that in case of 8-fold enhancement of path length 99% of the absorption of a thick CIGSe layer can be reached with 200 nm CIGSe and still 91% are feasible for 100 nm thickness. Considering absorber fabrication processes which rarely allow to fall under 100 nm layer thickness, an up

to 10-fold path length enhancement should be fairly sufficient. In addition to this rough estimation, detailed calculations for j_{SC} enhancement as a function of optical path length inside CIGSe can be found in [6].

2.2. Micro-/macroscopic concepts for light management

The basic losses occurring due to high front and poor back reflection as pointed out in the previous sub-section can in principle be approached by macro-/microscopic concepts. The front layers CdS/i-ZnO/ZnO:Al with refractive indices $n = 2.29/1.93/1.78$ at $\lambda = 800$ nm already provide a good refractive index gradient to reduce reflection losses from the absorber with $n = 2.88$ at $\lambda = 800$ nm, as we have seen above. The addition of a MgF_2 anti-reflection layer on top with $n = 1.38$ at $\lambda = 800$ nm further improves the slow gradual transition from air to absorber. In addition to choosing refractive indices of layers such that n of each intermediate layer corresponds approximately to the geometric average of the refractive indices of adjacent layers, the layer thicknesses may be adapted to fulfill the general $\lambda/4n$ condition for minimizing reflection. As multiple reflections of the complete thin film stack need to be considered, this however turns out as a coupled optimization problem requiring to adjust all layer thicknesses simultaneously. Optimized values of layer thicknesses for the CdS/i-ZnO/ZnO:Al/ MgF_2 stack were given as $d = 50/50/100/104$ nm in [7] and as $d = 65/50/90/120$ nm in [8], the latter one also optimizing sub-gap transmission of the—in this case $CuGaSe_2$ —top-cell. These values represent minimum layer thicknesses; for electrical reasons thicker layers may be preferable in order to avoid shunting (CdS, i-ZnO) and improve conductivity (ZnO:Al). In a trade off against losses we therefore usually chose $d = 100/130/240$ nm for the front contact layers (no MgF_2) of ultra-thin devices which are prone to shunting through pinholes in the thin absorber.

The influence of the ZnO as well as of the CIGSe thickness itself on the device reflection and absorption has also been studied by Xu *et al* [9] and variations as a results of Fabry–Perot resonances were visualized. One result was that a 450 nm thick absorber may even perform better than a 500 nm thick one. The authors furthermore showed that front patterning will smoothen interferences and hence increase tolerance in thickness precision. Front texturing was also theoretically investigated by Campa *et al* [10] and Dahan *et al* [11] and identified to have potential benefits for reduced reflection, yet not as far as increased large angle scattering is concerned since the latter one rather increases parasitic absorption in the front contact layers due to the prolonged path lengths [10]. It was also shown that inserting a ZnO intermediate layer between CIGSe and the back contact (Mo or Ag) can significantly improve back reflection; this idea dates back to an earlier publication [12] but still remains questionable from an experimental point of view. A back contact made from a transparent conductive oxide (TCO) and an excellent back reflector at the rear of the glass substrate may be preferable to maintain the electrical performance.

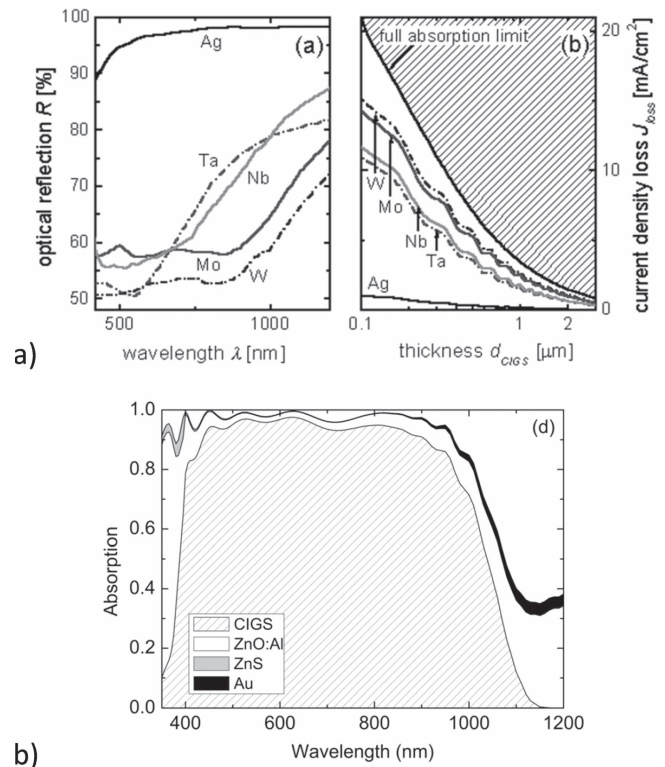


Figure 2. (a) Optical reflectivity and simulated absorption losses of different back contact materials in CIGSe solar cells (reprinted from [13], copyright (2003), with permission from Elsevier); (b) calculated absorption for ultra-thin (500 nm) CIGSe solar cell of structure Au/CIGSe/ZnS/ZnMgO/ZnO:Al/anti-reflection coating (reprinted from [11], with the permission of AIP Publishing).

Replacing the poorly reflective Mo back contact by alternative materials has been investigated by several groups. W, Ta and Nb were identified as alternative back contacts with improved reflectivity by Orgassa *et al* and a solar cell efficiency surpassing the one on Mo back contact by 0.4% absolute was shown for W [13]. In contrast, despite their promising reflectivity Ti, V, Cr and Mn were found to deteriorate the solar cell performance due to their reactivity with Se during the absorber growth process. Figure 2(a) summarizes calculated reflectivity and absorption losses expressed in current densities for Mo, W, Ta, Nb and Ag. Malmström *et al* [12] investigated TiN as alternative back contact and also experimentally proved an enhancement in EQE (external quantum efficiency) corresponding to 0.8 mA cm^{-2} . Highly reflective metals like Au and Ag would be most favorable to replace Mo from an optical point of view but pose challenges of diffusion into the absorber at the high CIGSe deposition temperatures. Dahan *et al* [11] have proven the benefit of a Au back contact also experimentally by transferring the solar cell onto the Au substrate after growth. This method however remains limited to small solar cell sizes and for large scale applications alternatives have to be investigated. In figure 2(b) the calculated absorption for an ultra-thin (500 nm) CIGSe solar cell with anti-reflection coating, Au back contact and additionally CdS replaced by higher band-gap ZnS is shown.

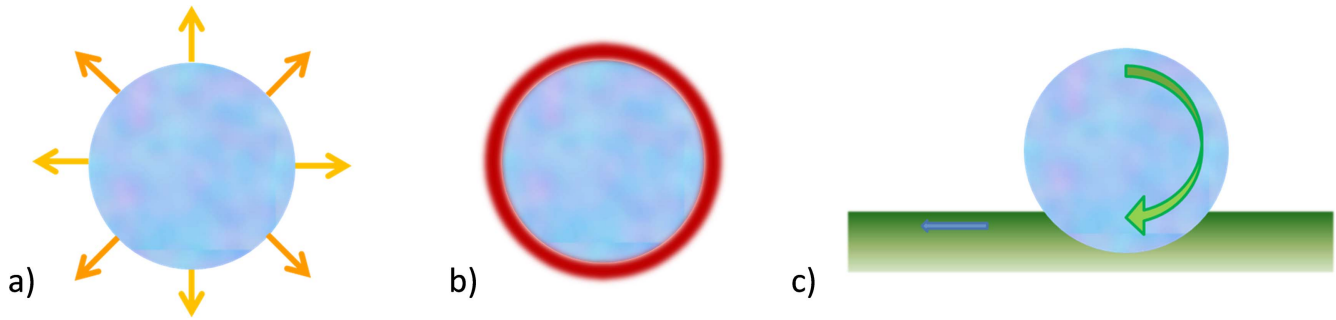


Figure 3. Effects of nanoparticle–light interaction: (a) scattering, (b) near-field enhancement, (c) coupling into waveguide modes.

2.3. Nanoscopic concepts for light management

Despite the improvement macroscopic approaches for light management can offer, they remain limited by geometrical optics. To further enhance light coupling and localization inside the absorber layer, nanooptical concepts are favored. The underlying three major mechanisms as introduced by Atwater and Polman [14] and summarized in figure 3 are: (a) nanoparticles rescatter absorbed light under a variety of angles including in particular large angles surpassing the angle of total reflection which can thus lead to light trapping inside a thin layer; (b) in the immediate vicinity of the nanoparticles light is localized and the enhanced field strength can contribute to absorption enhancement if the absorber is in close contact with the nanoparticles; (c) regularly arranged nanoparticles can couple light into waveguide modes and hence redirect normally incident light into the horizontal direction, i.e. inside the solar cell layers.

Figure 4 exemplifies the working mechanisms of nanoparticle–light interaction and also compares the behavior of metallic versus dielectric nanostructures. In figure 4(a) a Ag nanoparticle (Ag refractive index data from Palik [15]) with radius $r = 75$ nm in air and on a ZnO:Al interface is investigated. Light is always incident from top and an individual nanoparticle is simulated using the finite-element package JCMsuite [16] with perfectly matched layer (PML) boundary conditions. At the resonance in scattering, occurring at 480 nm wavelength, the electric near field depicted in the center picture clearly reveals localization at the interface. This observation correlates well with the favored forwards scattering observed in the far field, see the angular scattering distribution given in the right picture. Besides the pronounced forwards directivity the angular scattering distribution also reveals side lobes leading to light propagation under large angles with respect to the normal. Metallic nanoparticles on top of a CIGSe solar cell are therefore expected to scatter light towards the thin film stack and direct it into large angles. Yet, the large angular distribution will have diminished once reaching the absorber layer and in addition parasitic absorption of front contact layers and of the metallic nanoparticles themselves occur. Therefore, an integration at the rear of the absorber and in its close vicinity may be favored. Figure 4(b) exemplarily investigates the same Ag nanoparticle in CIGSe and at the interface to $\text{SnO}_2\text{:F}$ as an alternative transparent back contact. The dominating scattering resonance in the

visible occurring at $\lambda = 820$ nm is now the quadrupole resonance—compare the near field picture—and is a result of resonance red-shifting in higher index surrounding. The electric field remains dominantly confined in CIGSe and the angular scattering distribution confirms the preferential scattering towards this higher refractive index material as it is typical for metallic nanoparticles. The quadrupole mode also brings a large variety of scattering angles and strong light trapping inside the absorber layer can be expected as the angle of total reflection is clearly surpassed. Despite this highly promising behavior of metallic nanoparticles at the rear of the CIGSe absorber, the experimental realization remains challenging due to Ag stability which we will come back to in section 4.2. A promising alternative are dielectric nanoparticles since (in the case of inorganic materials) they are highly stable and additionally free from parasitic absorption. At the same time they can also show strong scattering [17] and figure 4(c) gives the example of an $r = 225$ nm SiO_2 nanoparticle (constant refractive index $n = 1.46$) in CIGSe and on the $\text{SnO}_2\text{:F}$ interface. The larger radius compared to the metallic nanoparticle had to be chosen to obtain the prominent scattering in the visible. In contrast to the Ag nanoparticle, the SiO_2 nanoparticle reveals a strong forwards scattering even though the refractive index of the substrate is lower than that of the surrounding. The behavior is visible both from the electric near-field and the angular scattering distribution given for $\lambda = 720$ nm, the latter additionally revealing a reduced scattering into large angles. Here, disadvantages of dielectric nanoparticles can be seen since they are always characterized by strong forwards scattering. The missing large angle scattering can however be compensated by a periodic arrangement of the nanoparticles as shown in figure 4(d). The pitch is 1.25 times the nanoparticle diameter. A wavelength of 670 nm was chosen for the representation as it visualizes both the strong focusing behavior, which is typical for dielectric nanoparticles, together with the coupling into waveguide modes that may be deduced from the periodic high intensity field confinement in between the nanoparticles occurring in lateral direction.

Periodically arranged dielectric nanostructures for absorption enhancement have initially been studied for Si solar cells [18] and various configurations reviewed in [19]. Besides Mie resonances also whispering gallery modes of dielectric particles have been investigated for light coupling into Si and GaAs solar cells [20]. Regarding the exploitation of

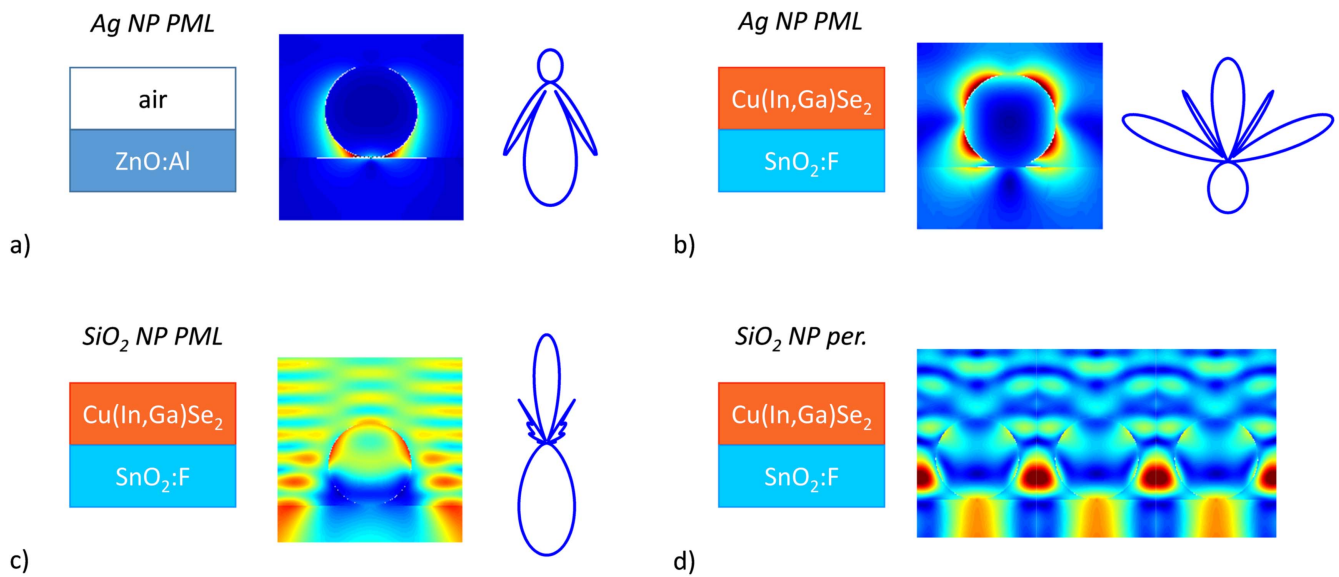


Figure 4. Near-field and scattering of (a) isolated (PML) Ag nanoparticle, radius 75 nm at air–ZnO:Al interface ($\lambda = 480$ nm, scale of normalized E-field 0–10), (b) isolated (PML) Ag nanoparticle, radius 75 nm at Cu(In,Ga)Se₂–SnO₂:F interface ($\lambda = 820$ nm, scale of normalized E-field 0–6), (c) isolated (PML) SiO₂ ($n = 1.46$, $k = 0$) nanoparticle, radius 225 nm at Cu(In,Ga)Se₂–SnO₂:F interface ($\lambda = 720$ nm, scale of normalized E-field 0–2), and (d) waveguide modes of periodic (pitch 1.25 times nanoparticle diameter) SiO₂ ($n = 1.46$, $k = 0$) nanoparticles, radius 225 nm at Cu(In,Ga)Se₂–SnO₂:F interface ($\lambda = 1180$ nm, scale of normalized E-field 0–4).

plasmonic resonances for absorption enhancement in solar cells a broad range of publications exists and in [21] an overview on the integration of metallic nanoparticles in silicon and organic devices is given. In [4] we have recently investigated typical nanoparticle configurations for CIGSe solar cells in comparison to other solar cell structures. The literature review on integration of various nanostructures in CIGSe solar cells will follow in section 4.

3. CIGSe solar cell and nanoparticle tuning

3.1. CIGSe solar cell fabrication

There are numerous articles describing the fabrication and optimization of Cu(In,Ga)Se₂ solar cells. These results shall not be reviewed here, but the general device structure and growth methods of the individual layers introduced to facilitate the understanding for possible—or not possible—integration options of nanostructures for light management. For further preparation details the reader is referred to the wide literature which has e.g. been reviewed and referenced in [22].

CIGSe solar cells are usually grown in substrate configuration on glass or alternatively on a flexible substrate like polyimide foil. Superstrate configurations, i.e. the growth of layers in inverted sequence as compared to the following introduction, have been tried, yet due to degradation of the buffer, which in this case is deposited prior to the absorber, have not proven very successful. The common back contact is a several 100 nm thick layer of Mo deposited mostly by sputtering. Mo is distinguished by its excellent conductivity and high stability also in subsequent high temperature processes. It is assumed to form an ohmic contact with CIGSe via a thin MoSe₂ layer emerging during the absorber growth.

A drawback of Mo is its poor reflectivity, yet finding alternative metallic back contacts is challenging since no inter-diffusion with CIGSe may occur and a good contact formation is required. TCOs like SnO₂:F (FTO), In₂O₃:Sn (ITO) or In₂O₃:H (IOH) are however alternatives for back contact materials. They can also allow for rear side illumination of the device, giving rise to a sometimes called ‘backwall superstrate’ configuration with rear illumination but no inversion of the layer growth sequence. When growing on TCO back contacts it has to be considered that additional Na, usually in form of NaF, needs to be provided for the formation of high quality CIGSe material. Na, which in the standard configuration diffuses from soda lime glass through the Mo back contact, is well known to support the CIGSe grain formation. Recently also KF has gained significant importance for further efficiency enhancement via increased voltages.

The most crucial deposition step in the device fabrication is the growth of the absorber itself. We can distinguish two major approaches for CIGSe absorber growth which also find application in production: the coevaporation and the sequential process. The first one can be conducted in various ways, reaching from a one-step coevaporation of all elements simultaneously over a bilayer, or often called ‘Boeing process’, to the very common 3-stage process of In–Ga/Cu/In–Ga deposition in selenium excess. Multi-stage processes allow to go through a Cu-rich phase which benefits the grain growth and also facilitates fabrication of graded layers. Common to all these coevaporation processes is that they need to be conducted at elevated temperatures of 400 °C–600 °C held for times in the order of an hour (strong variations may occur depending on lab scale or industrial processes). In contrast, the sequential process can achieve much shorter times at elevated temperatures. The metals Cu, In and

Ga are provided as a precursor stack which is subsequently selenized with elemental selenium or H_2Se at temperatures of 400°C – 600°C as well, yet within times of the order of minutes. Furthermore, such a two-step process also finds application in alternative fabrication approaches where the metal precursor is fabricated e.g. by electrodeposition or from nanoparticle-based solutions/inks. The standard final absorber thickness is $2\text{--}3\ \mu\text{m}$.

The intrinsic p-type CIGSe absorber is then combined with a so called ‘window layer’ comprising most commonly $\text{CdS}/\text{i-ZnO}/\text{ZnO:Al}$. Among others, the wide band gap CdS buffer layer helps to improve the band alignment and together with the intrinsic ZnO layer levels out inhomogeneities of the absorber, thus reducing electrical losses. CdS with a thickness of $50\text{--}100\ \text{nm}$ is generally formed by chemical bath deposition, a solution based non-vacuum process. Therefore, and in order to replace Cd , alternative buffer layers and according in-line compatible fabrication processes were considered leading to $\text{Zn}(\text{O,S})$, ZnMgO or In_2S_3 . Intrinsic ZnO is deposited next with a thickness of $50\text{--}200\ \text{nm}$, generally by sputtering. Finally follows ZnO:Al (AZO) with a thickness of at least $100\ \text{nm}$, in modules of several $100\ \text{nm}$. AZO is the common n-type semiconductor used to complete the pn-junction; an alternative is ITO, or recently also IOH. This highly doped TCO is usually sputtered and room or maximum slightly elevated temperatures $<200^\circ\text{C}$ are used in order to avoid damage of the CdS buffer layer and its interdiffusion with CIGSe. Ni/Al grids are added to the solar cells for front contacting.

In summary of the CIGSe solar cell fabrication processing, the following points are important to remember when later discussing the integration of nanostructures:

- The absorber growth happens at elevated temperatures of 400°C – 600°C held—depending on the process—for several minutes to hours.
- The front contact is formed by a multilayer system comprising usually $\text{CdS}/\text{i-ZnO}/\text{AZO}$ with a total thickness of at least $200\ \text{nm}$.
- The buffer layer CdS is sensible to high temperatures as degradation and diffusion may occur above 200°C .
- The back contact layer also has to meet thermal and chemical requirements as it experiences the high temperatures during the absorber deposition.

3.2. Performance of ultra-thin CIGSe solar cells

As early as 1988 Birkmire *et al* [23] investigated the influence of CuInSe_2 absorber thickness reduction on the solar cell performance. At that time already bromine etching of chalcopyrite absorbers as a means of thickness and surface roughness reduction was reported. Down to an absorber thickness of $1\ \mu\text{m}$ no major losses in open-circuit voltage and light generated currents (when corrected for the changed reflection) were observed.

In 1998 Negami *et al* [24] investigated the effect of $\text{Cu}(\text{In,Ga})\text{Se}_2$ absorber thickness by reducing the deposition time of a 3-stage process. Whilst still obtaining a good

performance for $860\ \text{nm}$ absorber thickness, there was a serious breakdown for the devices with $470\ \text{nm}$, which was attributed to the high surface roughness getting in the order of the absorber thickness.

At about the same time the group of Shafarman in Delaware started to look in detail into ultra-thin CIGSe absorbers. A first drop in efficiency and related solar cell parameters open circuit voltage V_{OC} , short circuit current density j_{SC} and fill factor FF has been observed around $1\ \mu\text{m}$ absorber thickness [25]. Further studies of continued thickness reduction were performed comparing thin as-deposited to etched absorbers [26]. Differences in surface roughness arose and a stable FF for etched absorbers of reduced thickness compared to a drop for as-deposited ones resulted. j_{SC} for the two types of samples followed the same trend of reduction with decreasing absorber thickness. A major benefit of ultra-thin CIGSe solar cells could be demonstrated in the so called ‘backwall superstrate configuration’ where the cell is illuminated through the glass substrate and a transparent back contact [27]. In this configuration parasitic losses from the front contact layers, in particular CdS , can be reduced and a back reflector used. Yet, light incidence from the absorber surface opposite to the pn-junction requires thin absorbers due to limited minority carrier lifetimes and diffusion lengths. Therefore, ultra-thin absorbers ($d \leq 500\ \text{nm}$) outperform thick ones in such backwall superstrate devices. 8.8% efficiency were achieved for $430\ \text{nm}$ absorber thickness in backwall superstrate (using a Ag backreflector) compared to 6.6% in regular substrate (with Mo back contact) configuration.

The growth of ultra-thin CIGSe absorbers by reduction of deposition time has also been investigated by other groups. At NREL for example Ramanathan *et al* [28] used the codeposition and the 3-stage process to obtain efficiencies of 12.6% for $600\ \text{nm}$ and 9.1% for $400\ \text{nm}$ absorber thickness, respectively. Detailed analysis revealed both an increasing carrier and defect density with decreasing absorber thickness, which may lead to the lower V_{OC} . The question of V_{OC} and FF reduction for thinner absorbers has been and still is a central point of investigation pursued by various groups. Generally, a reduction in j_{SC} , resulting at least from incomplete absorption, is obviously expected. As to V_{OC} and FF different observations have been made. Often V_{OC} is mostly unaffected, except for a loss corresponding to the reduction of j_{SC} according to the diode equation $V_{\text{OC}} \approx \frac{AkT}{e} \ln \frac{j_{\text{SC}}}{j_0}$ with the diode quality factor A and the saturation current density j_0 , as well as the Boltzmann constant k , the electron charge e and the temperature T .

Yet, FF often reveals a stronger decrease which can be attributed to enhanced back recombination in the ultra-thin devices. This effect has been extensively studied since 2003 by a group in Uppsala, comparing e.g. graded and non-graded samples. A high back Ga gradient is known to reduce the back recombination by repelling electrons and was proven beneficial for ultra-thin devices by leveraging the losses in FF down to $500\ \text{nm}$ absorber thickness [29]. Electrical investigations also revealed an increased saturation current J_0 , which

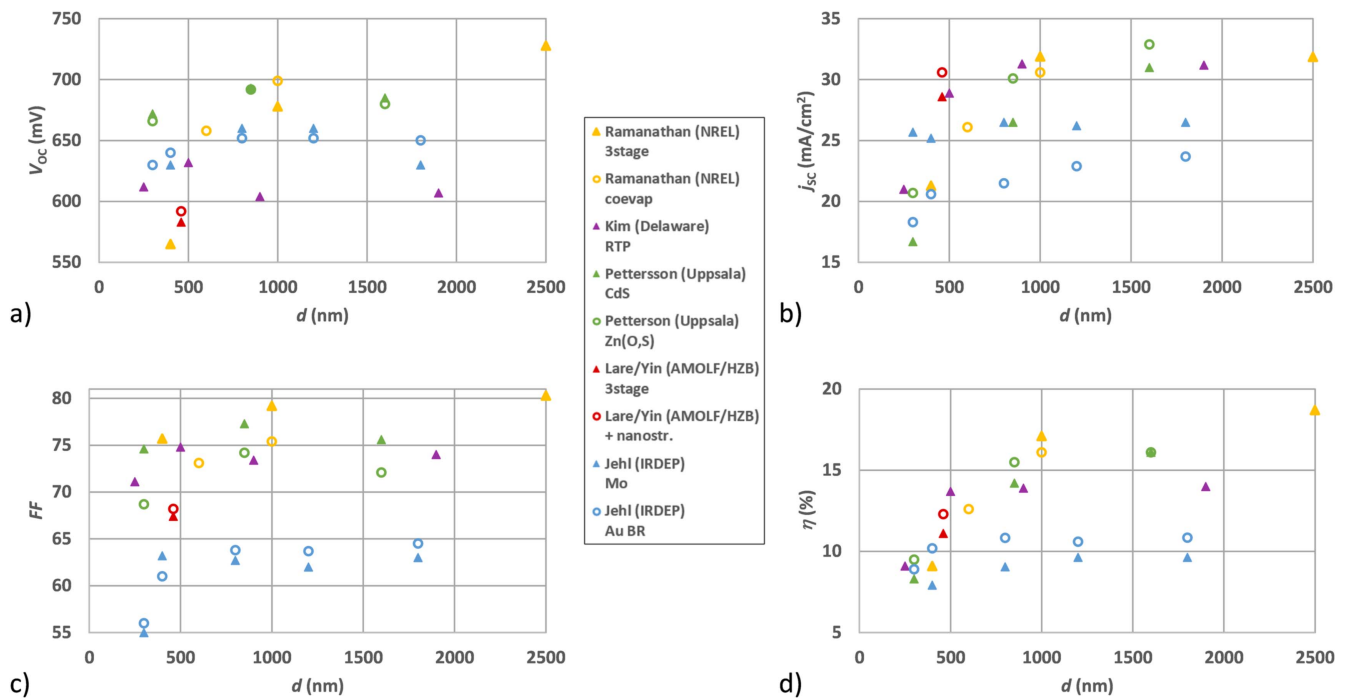


Figure 5. Performance of ultra-thin CIGSe solar cells: (a) open circuit voltage, (b) short circuit current density, (c) fill factor and (d) efficiency as a function of absorber thickness. Electrical performance parameters were taken from [28, 30, 33, 34, 36].

is governed by recombination, an increased diode quality factor A , pointing towards enhanced tunneling recombination, as well as a decreased shunt resistance R_{sh} . The reduced bulk recombination of ultra-thin absorbers is therefore clearly counteracted by an increased interface recombination. Best efficiencies obtained by this group exploiting a back Ga gradient were 12.1% for 600 nm [29] and 9.5% for 300 nm absorber thickness [30], the latter using Zn(O,S) as a buffer which reduces parasitic losses as compared to CdS. Further back contact passivation was obtained by point contacts, which will be discussed in more detail in section 4.4, resulting in a maximum efficiency of 13.5% for a 385 nm thick absorber. Detailed electrical calculations for the potential of ultra-thin CIGSe solar cells were for example performed by Gloeckler *et al* [31].

The above introduced early approach of ultra-thin CIGSe preparation by bromine etching of standard thick absorbers is still followed nowadays in the investigations of a group in France (IRDEP, CNRS). By this approach high quality absorbers (with an even increasing V_{OC} resulting from the change in band gap upon removal of surface layers) are obtained showing an efficiency of 10.3% for 500 nm absorber thickness [32]. These absorbers can serve as a basis for light trapping concepts, which on the micro-/macroscale include front ZnO texturing, replacing CdS/iZnO by less lossy ZnS/ZnMgO and the badly reflecting Mo back contact by Au [11]. The latter optimization step could be reached experimentally by a layer transfer of the ultra-thin absorber to the Au contact, showing high reflectivity and formation of an ohmic contact [33]. The fact that the CIGSe absorber is not grown directly onto the Au contact originates from the challenge of avoiding

diffusion of back contact metal during the high temperature absorber deposition process.

Most of the above described ultra-thin absorbers were grown without alteration of the standard growth process conditions (except for deposition times). Yet, an adaptation of the processes to the device thickness can be a key to higher efficiencies. By optimizing rapid thermal processing of metal precursor stacks for ultra-thin absorbers, Kim *et al* [34] could achieve elemental depth distributions comparable to the thick devices. This resulted in efficiencies as high as 13.7% for 500 nm and 9.1% for 250 nm absorber thickness compared to a reference value of 14.0% for 1.9 μm thickness. We recently adapted the 3-stage PVD process for ultra-thin absorbers reducing the substrate temperature from 610 °C to 440 °C which resulted in a high back Ga gradient and processing temperatures better compatible with the addition of nanostructures. Using this adapted process an increase of efficiency from 9.0% to 10.6% for a 460 nm thick absorber was reported [35]. Subsequent higher efficiencies and an increase to 12.3% followed upon integration of dielectric nanostructures [36], which will be detailed in section 4.3.

As a summary of the various attempts for fabricating ultra-thin CIGSe solar cells and investigating their performance as a function of thickness, figure 5 assembles device data obtained by different groups. Where available optimization results are considered as well.

3.3. Nanostructure fabrication and compatibility with CIGSe solar cells

For the preparation of nanostructures a variety of physical and chemical methods exists leading to either random or regular

arrangements. A good overview on various fabrication methods is given in [21], which is summarized in the following with an eye on nanostructure control and compatibility with CIGSe solar cell fabrication.

A very easy, scalable and in-line compatible fabrication approach is the thermal growth of mostly Ag nanoparticles by evaporation of a thin metal film and subsequent annealing. Typical Ag film thicknesses are $d = 5\text{--}25\text{ nm}$, annealing times $t = 10\text{--}60\text{ min}$ and annealing temperatures $T = 200\text{--}500\text{ }^{\circ}\text{C}$ [37, 38]. By adjusting these parameters, nanoparticle size, shape and density as well as polydispersity can be tuned, mostly by d , t and T , respectively, yet not completely independently. Nanoparticles with diameters above 100 nm suitable for efficient scattering can be obtained, but they are often accompanied by smaller particles and coverage generally remains high. Thermal growth was one of the initial approaches reported for Ag nanoparticle integration into Si solar cells [39]. When considering the integration into CIGSe solar cells, it however has to be considered that Ag nanoparticles on the back contact will diffuse into the absorber during its high temperature deposition process (and require passivating layers, see section 4.2). On the other hand, temperatures above 200 °C applied for Ag nanoparticle preparation on top of the finished CIGSe solar cell may trigger diffusion of the buffer layer.

A vacuum-free approach separating high temperature preparation steps from the nanoparticle integration goes via chemical synthesis followed by casting methods. Au or Ag nanoparticles can e.g. be obtained by reduction of HAuCl_4 with $\text{Na}_3\text{-citrate}$ [40] or AgNO_3 with NaBH_4 [41]. Seed mediated growth enables an increased control over nanoparticle size and shape [41, 42] which can be adjusted prior to the deposition on the device. Subsequent casting methods include dipping, drop casting or spin coating and enable separate control over particle density. Nanoparticle sizes reached by chemical synthesis are generally smaller than those obtained by physical growth since for larger particles stabilization in solution and avoidance of clustering become challenging. The solvent is the most critical parameter to be considered for nanoparticle integration into the device, yet as it is mostly water or ethanol, this is well compatible with CIGSe solar cells. For the integration adjacent to the absorber layer, a passivating oxide shell is favorable and it is easily accessible in the chemical route as well, see e.g. commonly used Au nanoparticles with SiO_2 shells [43].

Two further approaches for nanoparticle formation via chemical processes are spray pyrolysis and electrodeposition. In spray pyrolysis, both metallic [44] and dielectric nanoparticles [45] can be grown from precursor solutions that are nebulized and deposited onto a heated substrate. The nanoparticles form directly on the substrate, unifying nanoparticle growth and deposition in a single process step, yet with improved control over size and density. Recently, a low temperature process for deposition of Ag nanoparticles from Ag(hfacac)PMe_3 (hfacac: hexafluoroacetylacetonate) precursor was shown with substrate temperatures as low as 80 °C [46]. The solvent involved is just ethanol and compatible with CIGSe solar cells. In the other approach of electrodeposition,

the sample is immersed into an aqueous solution containing amongst other components e.g. NaAuCl_4 for Au [47] or $\text{Zn(NO}_3)_2$ for ZnO formation [48]. Then an electrochemical potential is applied between the sample and a counter electrode to trigger the nanostructure formation. Particles as well as nanorods are accessible and the variation of parameters like concentration, temperature, potential or deposition time allows control over dimensions. A drawback of the electrochemical route is the non-negligible interaction with the CIGSe solar cell which reflects e.g. in stunted growth of ZnO nanorods on top of Ni/Al front contact grids or difficulties in growing CIGSe onto ZnO nanorod coated substrates [49].

Finally, also methods like colloidal/nanosphere lithography or block copolymer lithography are solution based. They offer the great advantage of preparing ordered structures in a simple, scalable and low cost approach. In nanosphere lithography, mostly polystyrene (PS) or poly-(methyl methacrylate) (PMMA) beads are dispersed as a monolayer on the substrate by e.g. dip coating, spin coating or immersion. This mask—as it is or with nanosphere sizes adjusted via plasma or reactive ion etching—can then be used in various ways for nanostructure formation. The most popular routes are: deposition of the nanoparticle material onto the mask followed by lifting off the beads; deposition of resist onto the beads before lifting them off and deposition of nanoparticle material onto the resist prior to its removal (resulting in the negative of the structure obtained by the previous route); etching of material in between the mask and lifting off the beads afterwards [50]. Depending on the approach, this method gets by with simple solvents like water, ethanol, butanol and low concentrations of acids as well as with etching processes that do not negatively interfere with CIGSe solar cell structures. Therefore, nanosphere lithography offers an easy and compatible approach for ordered nanostructure formation with good control over size, shape and density via adequate choice of bead size and tuning of nanoparticle material deposition. Block copolymer lithography expands the flexibility for nanostructure fabrication based on a combination of two dissimilar polymer chains linked together and assembling in various morphologies, the one of which can be etched more easily than the other [51]. The increased complexity of formation and etching procedures may however bring challenges for integration into CIGSe devices.

The full control over the nanostructure geometrical properties is achieved by conventional lithography techniques. Electron or ion beam lithography enable patterning or direct writing [52] of high resolution nanostructures. Yet, as they are expensive, small scale and may also impact the solar device, they are instead of direct application rather used for the fabrication of molds. In nanoimprint lithography these molds are then stamped into a layer of resist which on its turn is used to generate nanopatterns [53, 54]. As in nanosphere lithography there are various options, like: deposition of the nanostructure material on top of the patterned resist followed by lifting off the resist; deposition of resist and patterning on top of a metal layer followed by etching of material in between the resist prior to its removal; usage of the patterned

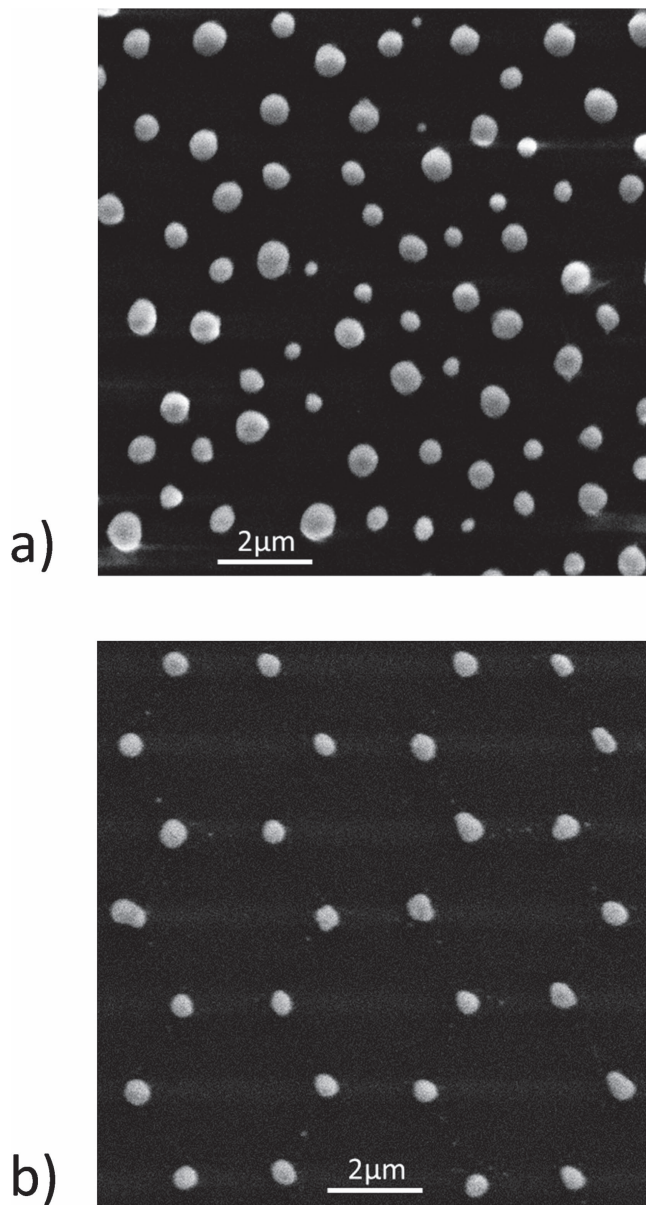


Figure 6. Ag nanoparticles formed (a) by thermal growth from a 20 nm thick Ag film and subsequent annealing at 500 °C for 20 min, (b) via nanosphere lithography depositing a 35 nm thick Ag film onto a 909 nm PS sphere template and annealing at 320 °C for 20 min after template removal.

resist itself as a nanostructure or overcoated with additional material. The resist, etching and lift-off solvent can be chosen to be compatible with CIGSe solar cell structures, i.e. by using PMMA/solgel as a resist, reactive ion etching and acetone for lift-off [36]. Thus, nanoimprint lithography is a promising approach for generating well-controlled nanostructures and at the same time it is an easy and scalable method.

To illustrate nanoparticles obtained by different growth methods, figure 6 depicts two examples of Ag nanoparticles. The particles in figure 6(a) were fabricated by thermal growth from a 20 nm thick Ag film annealed at 500 °C for 20 min, revealing spherically and ellipsoidal nanoparticles with size and density variation. A much more regular arrangement and

uniform particle size is obtained by nanosphere lithography: figure 6(b) visualizes the result of evaporating a 35 nm thick Ag film onto a 909 nm diameter PS sphere template and annealing the Ag triangles remaining after template removal at 320 °C for 20 min to form spherical particles.

In summary of the nanostructure fabrication processes, the following points need to be taken into account when considering the integration into CIGSe solar cells:

- High temperature processes ($T > 200$ °C) for nanostructure formation are detrimental when applied to the finished CIGSe solar cell.
- Metal nanostructures integrated prior to the high temperature CIGSe deposition require passivation by a dielectric spacer.
- Nanoparticle growth involving chemical processes should use simple solvents like water, ethanol or butanol to avoid influences on CIGSe solar cells.
- Etching processes (physical or chemical) have to be chosen carefully as well.

4. Effects of nanostructures in CIGSe solar cells

4.1. Intrinsic texturing

The wording intrinsic texturing implies texturing of one of the layers the basic CIGSe solar cell stack consists of. This approach may be a cheap way to introduce nanostructures whilst avoiding to add an additional material related to a further deposition step and possible challenges of compatibility with the other solar cell layers. The investigations of texturing the different layers include various theoretical calculations but a few experimental results exist.

Section 2.2 already mentioned the example of front ZnO texturing smoothening the interferences and hence increasing the tolerance for layer thickness variations [9] and overall reducing reflection [10]. Similarly, photonic structuring of the front (here) ITO layer was identified by Adreani *et al* to improve the anti-reflection behavior by better impedance matching at the air/ITO interface [55]. Figure 7(a) gives the example of this structures with—according to the sketch on top—dimensions in the range of 100–300 nm. The short circuit current density is expected to show a comparable increase for all investigated absorber layer thicknesses (bottom graph), confirming the anti-reflection behavior. Yet, no coupling of light via photonic modes to the absorber was mentioned in this context. Also when texturing the CdS layer (and the ZnO layer following exactly the same shape) the major effect identified by Hwang *et al* [56] was reduced reflection. Comparing conic, parabolic and quadratic shapes, they found the first ones to be most promising and an aspect ratio of 3 (height to base radius) resulted in the minimum reflection of 1%. These structures outperformed the standard MgF_2 anti-reflection coating in particular as far as angular tolerance was concerned.

Grating texturing of the rear contact (and subsequently all other layers) was simulated by Onwudinanti *et al* and the

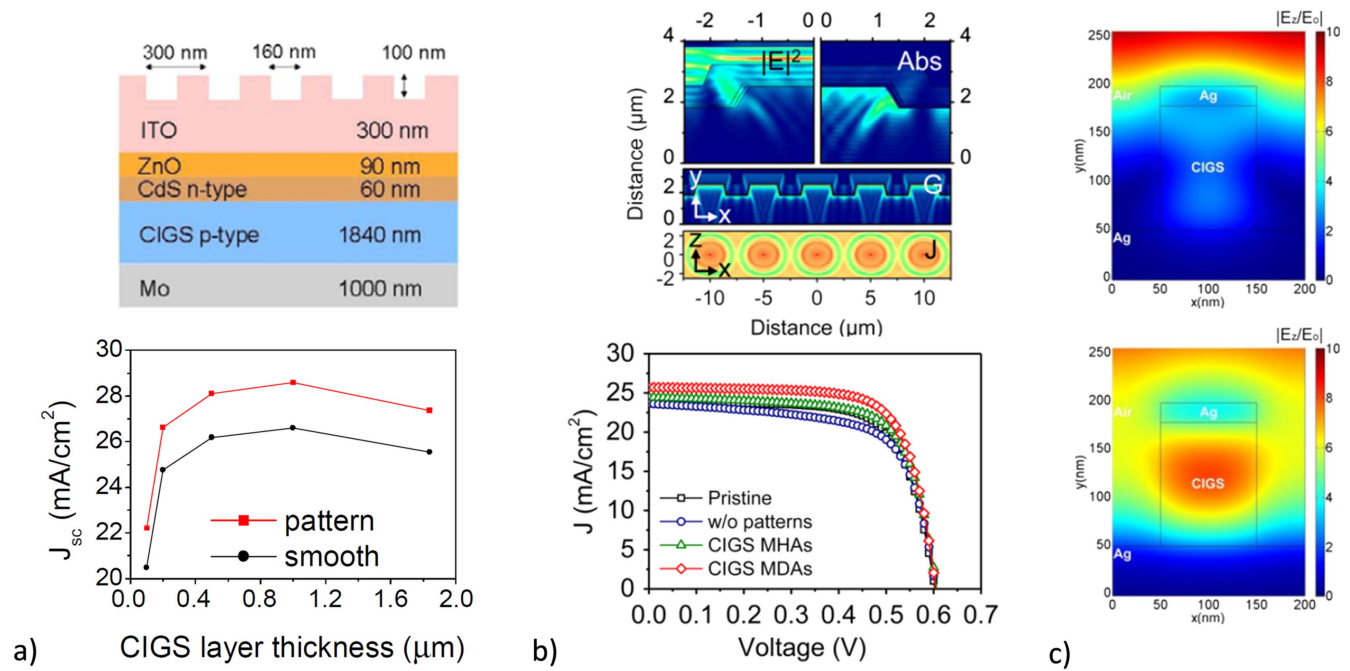


Figure 7. Intrinsic texturing of CIGSe solar cell: (a) front TCO grating structure with dimensions as given (top) and related j_{sc} increase compared to smooth reference (bottom). (Reprinted with permission from [55]). (b) Simulation of micro dome arrays showing electric field intensity $|E|^2$, absorption Abs , carrier generation rate G and photo-generated current J at a wavelength of 875 nm (top) and j_{sc} increase related to texturing of the CIGSe absorber with micro hole and microdome arrays (MHAs/MDAs) (bottom). (Reprinted with permission from [60]. Copyright (2015) American Chemical Society). (c) CIGSe nanograting metal-semiconductor-metal structure with 125 nm thick CIGSe, width 100 nm and period 200 nm: normalized electric field distribution at 490 nm (top) and 940 nm wavelength (bottom). (Reprinted with permission from [61]).

excitation of guided modes inside the absorber observed [57]. In contrast to the previously mentioned front contact textures, dimensions in the range of $2\ \mu\text{m}$ pitch and $0.5\ \mu\text{m}$ height were discussed here. For reduction of parasitic absorption in Mo, TCO back contacts were chosen and the overall optimized structure outperformed the planar thick reference even for 600 nm absorber thickness.

As far as the above mentioned literature results for front or rear contact textures are concerned, planar CIGSe solar cells served as starting point for extracting realistic refractive indices of layers. The texturing however was only investigated in simulation and therefore the experimental challenge of fabrication processes compatible with CIGSe solar cells has not been addressed. In contrast, the following examples of absorber texturing were confirmed experimentally, pointing out in the first case also the challenges related to fabrication of optical nanostructures: by applying ion-beam milling to CIGSe, nanotip arrays can be obtained. As Liao *et al* revealed in [58], the process however, aside to nanostructure formation, also leads to compositional changes and alteration of surface states. A resulting improvement in solar cell performance can thus not directly be related to an improved anti-reflection behavior as stated previously [59] but rather to the changes in composition and correlated electronic effects. In another example, Wang *et al* formed microdome and micro-hole arrays (MDAs/MHAs) in CIGSe layers using an agarose stamp replicated from a Si template [60]. The stamp was soaked with bromine solution and applied either directly (MHAs) or with additives (MDAs) to the single-step

sputtered CIGSe for local etching. Field localization and enhanced carrier generation have been identified from simulations most pronouncedly for the MDAs, compare the top part of figure 7(b) where electric field intensity, absorption, carrier generation rate and resulting photo-generated current are shown. The performance improvement by MHAs and MDAs was also proven experimentally for an approximately $2\ \mu\text{m}$ thick CIGSe layer as depicted in figure 7(b) bottom part and 11.22% efficiency obtained for the sample with MDAs. For thinner absorbers, the improvement with absorber texturing was found to be even higher.

Furthermore, Wang *et al* [61] have—again theoretically—investigated texturing the CIGSe absorber to nanograting strips deposited on a Ag layer and covered with another thin Ag stripe. This concept already provides the transition to the following sub-section on plasmonic structures and therefore shall be mentioned at the end. Setting aside for the moment all the challenges that will arise when trying to form a device, i.e. forming a pn-junction and avoiding diffusion of Ag into the absorber, the structure is very interesting from light trapping point of view. Whereas at some wavelengths (e.g. 490 nm, see top part of figure 7(c)) the Ag top contact is highly reflective, avoiding light to enter the absorber, there exist wavelengths (e.g. 940 nm, bottom part of figure 7(c)) where light is efficiently trapped inside the semiconductor grating of the sandwich structure, boosting the absorption in CIGSe. The exploitation of surface plasmon polaritons for coupling of light inside the absorber layer links to the application of metallic nanoparticles for absorption enhancement.

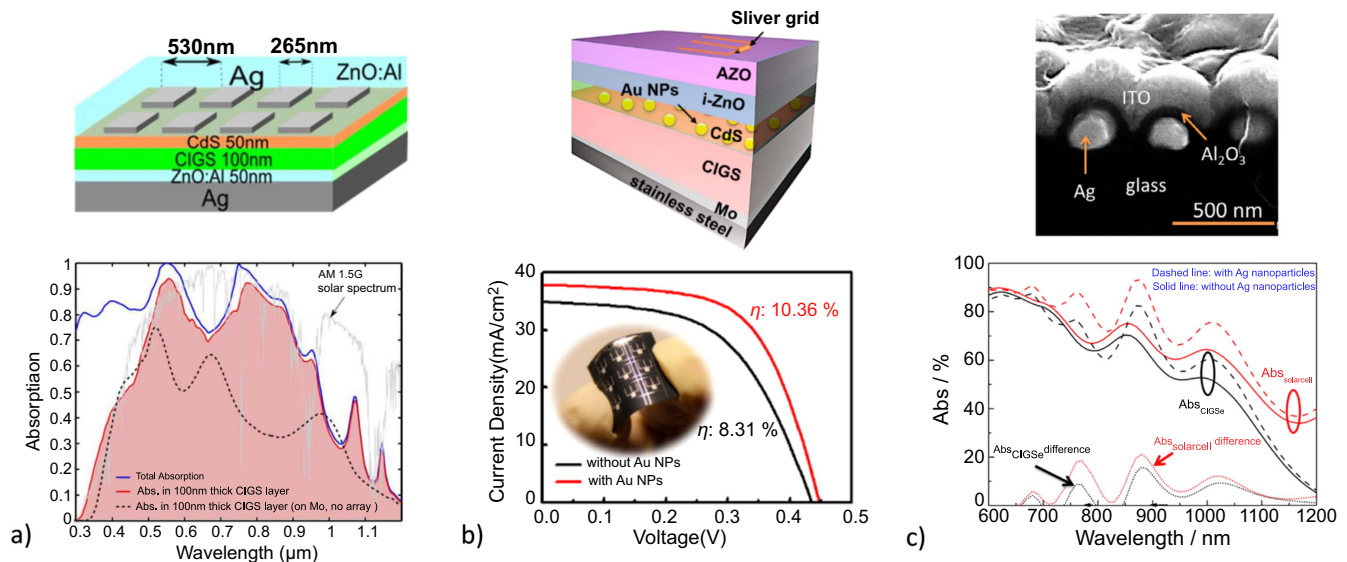


Figure 8. Metallic nanoparticles in CIGSe solar cells: (a) Ag nanograting embedded in front ZnO:Al plus Ag back reflector coupling light into 100 nm CIGSe absorber; structure (top) and absorption enhancement (bottom) as compared to reference with Mo back contact. (Reproduced with permission from [63]). (b) 10 nm Au nanoparticles at CIGSe/CdS interface (structure on top) leading to performance enhancement as visible from J/V characteristics (bottom). (Reprinted with permission from [67]. Copyright (2014) American Chemical Society). (c) Plasmonic back reflector based on Ag nanoparticles underneath ITO passivated by ALD Al_2O_3 (top) and result of integration into a CIGSe solar cell with attribution of absorption enhancement to CIGSe according to modeling (bottom.) (Reprinted from [70], copyright (2015), with permission from Elsevier).

4.2. Metallic nanoparticles

Following the above introduced CIGSe nanograting strips, the dual grating structure proposed by Le *et al* [62] shall be mentioned: both a Ag bottom and a CIGSe top grating were considered, leading to an extended numerical optimization problem which promises a theoretical improvement of j_{sc} by 24% for optimized parameters and averaged polarization. Field localization at the Ag/CIGSe interface as well as waveguide modes were identified for the 40 nm thick CIGSe absorber. In [63] Colin *et al* showed simulations of a metal–semiconductor–metal structure based on a more realistic CIGSe solar cell stack where also the n-type window layers (in particular CdS) are considered and the Ag nanopattern is embedded in the front ZnO. To address the diffusion problem of the rear Ag into the absorber layer, an additional ZnO:Al layer was introduced in between the planar Ag film and CIGSe—an approach which may be feasible in case of substrate transfer. The structure with optimized dimensions as shown at the top of figure 8(a) was identified theoretically to give rise to an 80% increase in photocurrent for a 100 nm thick CIGSe layer. The absorption improvement as compared to the planar reference with Mo back contact and 400 nm ZnO:Al window layer is visualized in figure 8(a) bottom part.

By adding metallic structures to the front of the solar cell, reflection losses can never be completely eluded, compare figure 7(c) top part and also [4]. Thus, the arising reflection together with parasitic absorption losses need to be balanced carefully against benefits resulting from light coupling and scattering. A similar observation was made by Jeng *et al* [64] who added Ag and Au nanoparticles of sizes above 100 nm to CIGSe solar cells by spin coating. The highest efficiency enhancement (2.3%) was found for the lowest nanoparticle

concentration (1%), underlining the trade-off between metal shadowing and scattering. The difference in enhancement as compared to a similar series on multi-crystalline Si solar cells was attributed to variations in surface roughness and absorber refractive index.

A direct contact of the nanoparticles with the absorber layer is beneficial to exploit additional near-field effects. Sputtering of Au nanoparticles onto sequentially processed CIGSe performed by Park *et al* [65] was observed to lead to a CIGSe/Au nanocomposite layer with improved absorption. An immediate impact of the nanoparticles on the CIGSe absorption in the solar cell cannot be deduced from this experiment but was investigated by Londhe *et al* [66] applying chemically synthesized Au nanoparticles by dip coating to electrodeposited CIGSe in a superstrate configuration. The observed increase in j_{sc} was attributed to nanoparticle scattering despite the best performance was observed for the densest nanoparticle coverage. As proven by Chen *et al* [67], 10 nm Au nanoparticles sprayed by air-brush onto inkjet-printed CIGSe could significantly enhance the efficiency from 8.31% to 10.36%, compare figure 8(b) bottom part. The solar cell structure is depicted on top and the position of the small nanoparticles right inside the pn-junction was correlated to enhanced field localization leading to both optical and electrical benefits: not just improved absorption and charge carrier generation are expected but also improved carrier extraction and thus reduced recombination.

On the other hand, metallic nanostructures inside the pn-junction could be expected to constitute additional recombination centers. Therefore, and to avoid reflection losses plus reduced those originating from parasitic absorption, an insertion of nanoparticles underneath the CIGSe layer may be

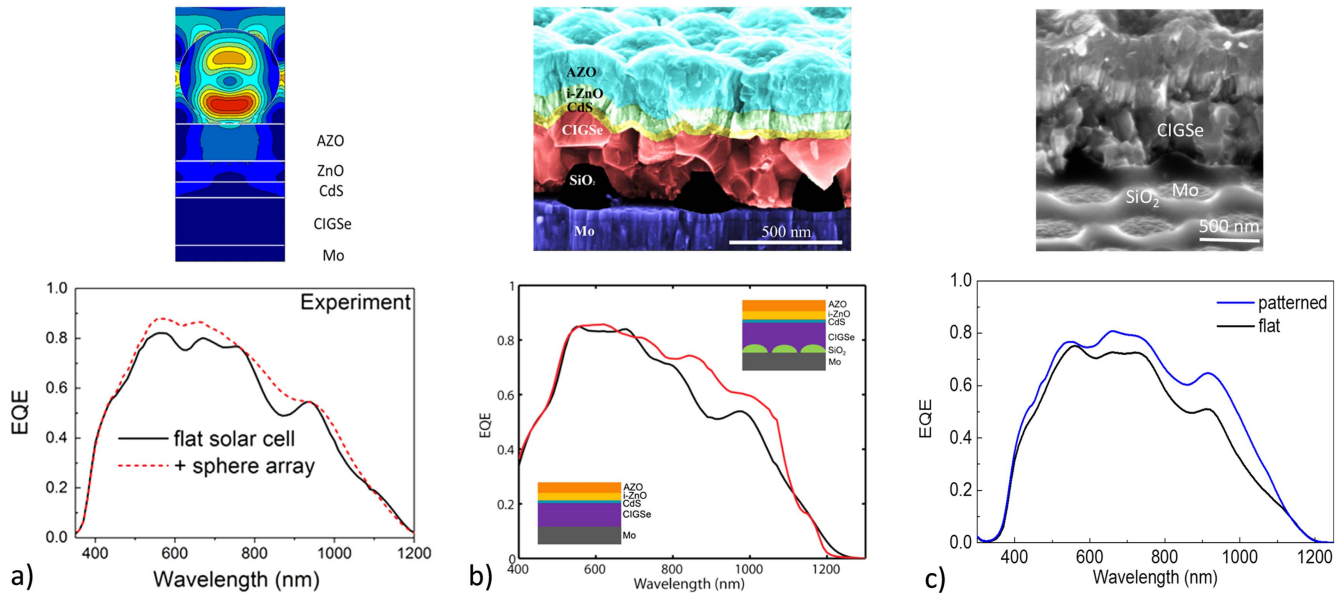


Figure 9. Dielectric nanostructures in CIGSe solar cells: (a) whispering gallery modes of large (600 nm diameter at 660 nm wavelength, top) and anti-reflection effect of small (120 nm diameter, bottom) SiO₂ nanoparticles on top of CIGSe solar cell. (Reprinted from [73], copyright (2016), with permission from Elsevier). (b) SiO₂ nanoparticles underneath CIGSe absorber (top) leading to broadband EQE enhancement as compared to planar reference (bottom). (Reprinted with permission from [36], Copyright (2016), with permission from American Chemical Society; [79] and John Wiley & Sons. Copyright Wiley-VCH 2016). (c) SiO₂ network/nanomesh structure underneath CIGSe absorber (top) and related EQE enhancement (bottom). (Reproduced with permission from [77]. Adapted version).

favorable. To avoid direct diffusion of in particular Ag into the CIGSe absorber a TCO back contact can be exploited as a spacer layer. In [68] we have shown the expected benefits for such a configuration and revealed in [69] that Ag nanoparticles underneath an In₂O₃:Mo layer may persist after rapid thermal processing for CIGS absorber formation. For improved stability also in the case of a longer high-temperature CIGSe growth process, the addition of an ALD-coated Al₂O₃ layer was introduced (ALD: atomic layer deposition). In [70] we prove that the structure as depicted in figure 8(c) top part avoids any diffusion of Ag and can constitute a promising nanostructured back reflector for CIGSe solar cells. The measured absorption enhancement shown in the bottom part of figure 8(c) could partially be attributed to absorption inside CIGSe as deduced from optical simulations of this structure.

As an alternative to passivate the nanoparticles, an absorber layer transfer may avoid the metallic nanostructures having to withstand a high temperature absorber deposition process. Goffard *et al* [71] have considered metal–dielectric nanostructured back mirrors under this aspect and investigated Ag–TiO₂ gratings on Ag theoretically and Au–TiO₂ gratings on Au experimentally. A j_{SC} of 35.9 mA cm⁻² was obtained for a 150 nm thick CIGSe layer in theory and 16.04 mA cm⁻² for 300 nm CIGSe in experiment. The latter corresponds to 2.3 mA cm⁻² j_{SC} increase compared to the flat mirror. The concept combines metallic and dielectric nanostructures and thus provides the transition to investigating purely dielectric particles in the next sub-section.

4.3. Dielectric nanostructures

The challenges of metallic nanoparticles related to parasitic absorption losses and instability during high temperature processes can be overcome by the use of dielectric structures which are absorption-free and in case of inorganic materials highly stable. Since light coupling via whispering gallery modes from large nanospheres has successfully been proven for other types of solar cells [72] we investigated SiO₂ spheres on top of finished CIGSe solar cells [73]. Resonant excitation was observed for spheres of 600 nm diameter, compare the top part of figure 9(a), but the thick front contact layers of the CIGSe solar cell prevent efficient coupling to the absorber. Thus, smaller spheres of approximately 100 nm diameter turned out more beneficial, acting as efficient anti-reflection coating, see the broadband EQE improvement in figure 9(a) bottom part. This behavior can be compared to the anti-reflection effect of the intrinsic front TCO texturing mentioned in section 4.1: in contrast to this structure the dielectric nanospheres require additional material, which however can be chosen to be very cheap and completely free from parasitic absorption. Furthermore, self-assembly is an easy, CIGSe-compatible and scalable method, as well as nanoimprint lithography, which can equally be applied. Using the latter approach we also investigated TiO₂ nanoparticles on top of finished CIGSe solar cells and confirmed anti-reflection to be the main benefit [36].

ZnO nanorods were investigated by A   *et al* [74] as antireflection coating for CIGSe solar cells and an enhancement in j_{SC} of 5.7% relative was found. As deduced by Ohm *et al* [49], besides the j_{SC} increase, the applied method of electrodeposition for ZnO nanorod growth may however also

have negative effects on V_{OC} and FF and the time in the chemical solution should be minimized. Using the ZnO nanorods underneath CIGSe in a backwall superstrate configuration or even bifacial solar cell was investigated as well. Yet, the CIGSe growth by coevaporation on top of the ZnO nanorods lead to interdiffusion and formation of interface states even at low deposition temperatures. Therefore, highly stable and chemically inert dielectric materials may be preferred for rear-side integration into CIGSe solar cells.

Due to their high chemical stability, SiO_2 nanoparticles can without any concerns about diffusion be integrated at the rear of the CIGSe solar cell and in direct contact with the absorber layer. Figure 9(b) shows an example of such a structure with conformal overgrowth of layers on top of nanoimprinted particles (top) and the resulting EQE enhancement corresponding to 2.3 mA cm^{-2} j_{SC} increase (bottom) [36]. An efficiency of 12.3% was obtained for the 460 nm thick absorber. The remaining losses could largely be attributed to parasitic absorption in the Mo back contact so that in a next step we investigated the SiO_2 nanoparticles on top of a TCO back contact [75]. Losses in the back contact were significantly reduced and transmitted light could be reflected back into the solar cell structure by a Ag mirror deposited at the rear of the glass substrate, thus preventing any diffusion issues of Ag. A comparison of these ultra-thin (390 nm absorber thickness) CIGSe solar cells to the world record device from [76] yielded 93% of the short circuit current density. Besides optical effects of the nanoparticles leading to coupling into waveguide modes, also electrical benefits were identified and related to a reduced back barrier and thus improvement of the generally poorly performing CIGSe/ITO contact.

Combined optical and electrical benefits from dielectric nanostructures were further addressed in [77, 78] where instead of nanoparticles networks were investigated that originated from filling the spaces in between self-assembled nanospheres, compare the structure in figure 9(c) top part. These networks or nanomeshes revealed a broadband EQE enhancement corresponding to 4 mA cm^{-2} short circuit current density as given in figure 9(c) bottom part. It was partially ascribed to light coupling and to some extent to reduced interface recombination resulting from the emerging point contact structure. The exploitation of electrical on top of optical effect is a major direction for the further development of nanostructures in CIGSe solar cells and therefore point contact schemes will be addressed in the following subsection.

4.4. Point contact schemes

As mentioned above, dielectric nanostructures directly underneath the CIGSe absorber may besides their photonic effects also lead to reduced interface recombination. The influence of reduced contacting area or point contact schemes was investigated from an electrical point of view in detail by Vermang *et al.* In [80] they proposed the formation of a passivation layer with point openings via the deposition of

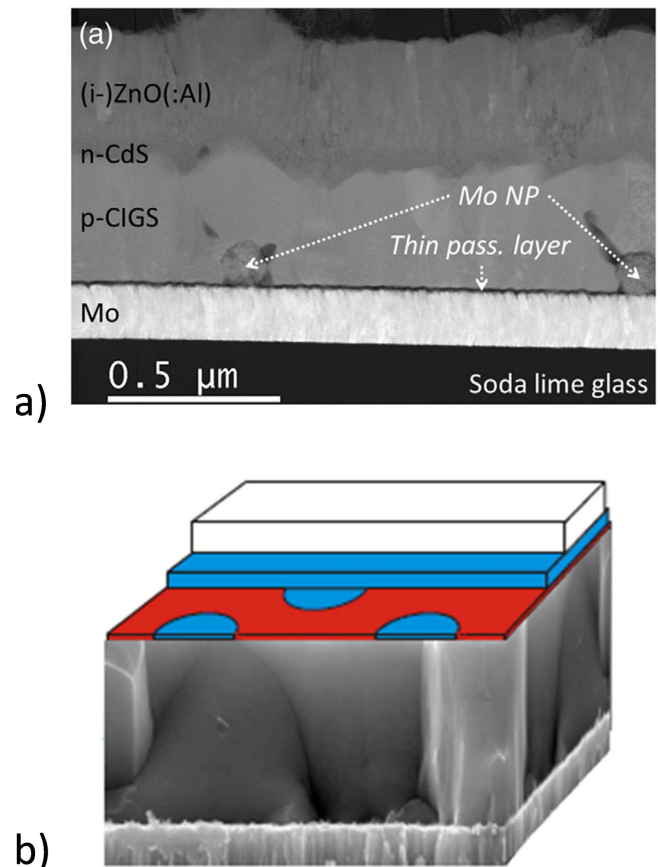


Figure 10. Point contact schemes: (a) Mo nanoparticle based point contact at Mo/CIGSe interface. (Reprinted from [82], copyright (2015) with permission from Elsevier). (b) Proposed point contact structure for CIGSe/CdS interface. (Reprinted from [84], with the permission of AIP Publishing).

CdS nanoparticles, overcoating with Al_2O_3 and subsequent removal of the nanoparticles. The point contact diameter was in the range of a few hundred nm and the spacing of the order of few μm allowing for complete carrier collection. Al_2O_3 was chosen due to its excellent passivation properties resulting from a high density of negative charges. In addition to the electrical effects of reduced interface recombination also an improved rear surface reflectivity was identified which could be further improved by choosing a $\text{MgF}_2/\text{Al}_2\text{O}_3$ bilayer with only a thin Al_2O_3 layer providing the required electrical interface properties [81]. The application of the Al_2O_3 passivation layer conjoint with scattering Mo nanoparticles to ultra-thin CIGSe solar cells was shown in [82] (see figure 10(a)) and 8.8% efficiency obtained for a 380 nm thick CIGSe absorber with single-graded Ga content. A separate investigation of microstructured MgF_2 and Al_2O_3 layers as back contact passivation was performed by Casper *et al* [83] and significant improvement observed even for point contact spacings in the order of $10 \mu\text{m}$.

The idea of point contacting schemes goes back to Si passivated emitter rear cells and thus even prior to the investigation of back surface passivation of CIGSe cells, a similar point contact scheme has been proposed by Allsop

et al [84] for the front CdS/CIGSe interface, see figure 10(b). In a theoretical investigation, point openings of a few nm radius were identified most beneficial and the spacing chosen in the μm -range. 5% absolute efficiency increase were expected for the interface passivating point contact structure compared to the planar reference. A proof of concept for the front interface passivation by nanostructures was given by Fu *et al* [45] using ILGAR-deposited ZnS nanoparticles for passivation and an In_2S_3 buffer layer on top (ILGAR: ion layer gas reaction). This structure outperformed both the In_2S_3 reference without ZnS nanodots as well as the standard CdS buffer layer. When investigating point contact structures interface defect density, recombination paths and band alignment have to be considered carefully. These electrical properties add to the optical considerations when a joint concept is aspired and will give rise to many interesting structures for further research.

Additionally benefiting from chemical changes that may occur with nanostructure formation, an extended space of optimization is opened. Recently, Reinhard *et al* [85] have proposed the self-assembled alkali-salt method to introduce nanostructures on CIGSe or as template for other materials. Since the introduction of alkali salts is also a key for efficiency enhancement when growing CIGSe, coupled effects emerging from material and interface changes and nanostructure formation are to be expected. Thus for the future, combined optical, electrical and chemical effects may play an important role when investigating nanostructures in CIGSe solar cells.

5. Discussion and outlook

Many of the above summarized results on nanostructure integration into CIGSe solar cells for light management were of theoretical nature. Therefore, challenges arising from fabrication had not to be dealt with. In this perspective, also metallic nanostructures integrated directly adjacent or even underneath the absorber layer appear promising. Looking at the experimental realization however, metal stability and interdiffusion are serious concerns and means of passivation are required. Furthermore, parasitic absorption of metal nanoparticles will always remain an inevitable challenge. For direct integration with the absorber layer and most effective exploitation of photonics effects, dielectric nanostructures may be favorable. They are free from parasitic absorption and can be chosen from highly chemically stable materials grown in processes compatible with CIGSe solar cells. An overview on integration of metallic and dielectric nanoparticles at front and rear interfaces of CIGSe solar cells considering both theoretical expectations and stable experimental realization was given in [4]. On the other hand, purposeful changes in chemical properties arising from nanostructure integration may be desired when aiming at improvement of interface states. Considering in addition point contact schemes, leading to reduced interface recombination, dielectric structures are highly promising for future investigations of combined optical and electrical effects.

Several of the cited nanooptical concepts can equally be applied to standard and ultra-thin CIGSe solar cells. This relates in particular to schemes aiming at reduced front interface reflection. Increased rear contact reflectivity in contrast becomes of interest for ultra-thin devices only as does improved light localization and trapping inside the absorber layer. It shall however be mentioned that in case of poor quality absorbers with incomplete absorption even for thick solar cells, light trapping schemes may equally be required. Therefore, nanostructured light control is beneficial for cost reduction in a double sense: firstly for cheap absorber fabrication processes resulting in insufficient absorption due to poor material quality and secondly for ultra-thin absorbers saving material in layers of less than 500 nm thickness which asides incomplete absorption show good optoelectronic properties. In perspective of the overall aim of highest efficiency at lowest cost, a minimum amount of high quality material paired with sophisticated nanostructures for efficient photon and electron management is desired.

6. Summary

In this review nanostructures for light management in chalcopyrite (CIGSe) solar cells were addressed. After presenting the losses in absorption occurring for CIGSe layer thicknesses below $1\ \mu\text{m}$, micro-/macroscopic concepts for light management were compared to nanoscopic approaches. Reduction of front and increase of rear interface reflection can be achieved whereas nanostructures additionally amplify lateral light coupling and thus most efficient localization of electric field inside the absorber. The subsequent representation of CIGSe solar cell and nanostructure fabrication aimed at giving a guideline for the development of nanostructures and their integration for light management in CIGSe solar cells. A section was added to review the performance development of ultra-thin CIGSe solar cells as these are the devices that will on the long run fulfill the aim 'less material, higher efficiency'. The central review on nanostructures integrated into CIGSe solar cells revealed many theoretically and some experimentally promising concepts including intrinsic texturing, metallic nanoparticles and dielectric nanostructures. As discussed in the previous section, challenges arising from experimental realization reduce the amount of feasible configurations. Yet, also purposeful changes in material properties and the combination of optical and electrical benefits may be of interest for further research. For the future development of innovative nanostructures for highly efficient CIGSe solar cells the reader shall be inspired by the current state-of-the-art and guided by the experimental conditions arising in practical realization.

Acknowledgments

M Song is acknowledged for providing the structures and pictures of figure 6 as well as is the NanooptiX group for discussion. Simulation results using JCMSuite were obtained

at the Berlin Joint Lab for Optical Simulations for Energy Research (BerOSE) of Helmholtz-Zentrum Berlin für Materialien und Energie, Zuse Institute Berlin, and Freie Universität Berlin. Funding was received from the Helmholtz Association for the Young Investigator Group VH-NG-928 within the Initiative and Networking fund.

References

- [1] Zentrum für Sonnenenergie- und Wasserstoff-Forschung Baden-Württemberg 2016 Press Release 09/2016: ZSW Sets New World Record for Thin-film Solar Cells <https://www.zsw-bw.de/en/newsroom/news/news-detail/news-detail/News/zsw-sets-new-world-record-for-thin-film-solar-cells.html>
- [2] Morioka C *et al* 2011 First flight demonstration of film-laminated InGaP/GaAs and CIGS thin-film solar cells by JAXA's small satellite in LEO *Prog. Photovolt., Res. Appl.* **19** 825–33
- [3] British Geological Survey 2015 Risk list <http://www.bgs.ac.uk/mineralsuk/statistics/risklist.html>
- [4] Schmid M, Manley P, Ott A, Song M and Yin G 2016 Nanoparticles for light management in ultra-thin chalcopyrite solar cells *J. Mater. Res.* **31** 3273
- [5] Yin G, Merschjann C and Schmid M 2013 The effect of surface roughness on the determination of optical constants of CuInSe₂ and CuGaSe₂ thin films *J. Appl. Phys.* **113** 213510
- [6] Krc J, Sever M, Campa A, Lokar Z, Lipovsek B and Topic M 2016 Optical confinement in chalcopyrite based solar cells *Thin Solid Films* in press
- [7] Jackson P, Würz R, Rau U, Mattheis J, Kurth M, Schlötter T, Bilger G and Werner J H 2007 High quality baseline for high efficiency, Cu(In_{1-x}Ga_x)Se₂ solar cells *Prog. Photovolt., Res. Appl.* **15** 507–19
- [8] Schmid M, Krč J, Klenk R, Topič M and Lux-Steiner M C 2009 Optical modeling of chalcopyrite-based tandems considering realistic layer properties *Appl. Phys. Lett.* **94** 053507
- [9] Xu M, Wachters A J, van Deelen J, Mourad M C and Buskens P J 2014 A study on the optics of copper indium gallium (di)selenide (CIGS) solar cells with ultra-thin absorber layers *Opt. Express* **22** A425–37
- [10] Čampa A, Krč J, Malmström J, Edoff M, Smole F and Topič M 2007 The potential of textured front ZnO and flat TCO/metal back contact to improve optical absorption in thin Cu(In,Ga)Se₂ solar cells *Thin Solid Films* **515** 5968–72
- [11] Dahan N, Jehl Z, Hildebrandt T, Greffet J J, Guillemoles J F, Lincot D and Naghavi N 2012 Optical approaches to improve the photocurrent generation in Cu(In,Ga)Se₂ solar cells with absorber thicknesses down to 0.5 μm *J. Appl. Phys.* **112** 094902
- [12] Malmström J, Lundberg O and Stolt L 2003 Potential for light trapping in Cu(In,Ga)Se₂ solar cells *3rd World Conf. on Photovoltaic Energy Conversion* pp 344–7
- [13] Orgassa K, Schock H W and Werner J H 2003 Alternative back contact materials for thin film Cu(In,Ga)Se₂ solar cells *Thin Solid Films* **431–432** 387–91
- [14] Atwater H A and Polman A 2010 Plasmonics for improved photovoltaic devices *Nat. Mater.* **9** 205–13
- [15] Palik E D 1985 *Handbook of Optical Constants of Solids* (Orlando: Academic) ISBN: 978-0-12-544415-6
- [16] JCMwave GmbH 2016 JCMSuite Software <http://www.jcmwave.com>
- [17] Schmid M, Andrae P and Manley P 2014 Plasmonic and photonic scattering and near fields of nanoparticles *Nanoscale Res. Lett.* **9** 50
- [18] van Lare C, Lenzmann F, Verschuuren M A and Polman A 2015 Dielectric Scattering patterns for efficient light trapping in thin-film solar cells *Nano Lett.* **15** 4846–52
- [19] Brongersma M L, Cui Y and Fan S 2014 Light management for photovoltaics using high-index nanostructures *Nat. Mater.* **13** 451–60
- [20] Grandidier J, Callahan D M, Munday J N and Atwater H A 2012 Gallium arsenide solar cell absorption enhancement using whispering gallery modes of dielectric nanospheres *IEEE J. Photovolt.* **2** 123–8
- [21] Gu M, Ouyang Z, Jia B, Stokes N, Chen X, Fahim N, Li X, Ventura M J and Shi Z 2012 Nanoplasmonics: a frontier of photovoltaic solar cells *Nanophotonics* **1** 235–48
- [22] Singh U P and Patra S P 2010 Progress in polycrystalline thin-film Cu(In,Ga)Se₂ solar cells *Int. J. Photoenergy* **2010** 468147
- [23] Birkmire R W and McCandless B E 1988 Specular CuInSe₂ films for solar cells *Appl. Phys. Lett.* **53** 140–1
- [24] Negami T, Nishiwaki S, Hashimoto Y and Kohara N 1998 Effect of absorber thickness on performance of Cu(In,Ga)Se₂ solar cells *2nd World Conf. on Photovoltaic Solar Energy Conversion*
- [25] Shafarman W N, Birkmire R W, Marsillac S, Marudachalam M, Orbey N and Russell T W F 1997 Effect of reduced deposition temperature, time, and thickness on Cu(In,Ga)Se₂ films and devices *Conf. Record of the 26th IEEE Photovoltaic Specialists Conf., 1997* pp 331–4
- [26] Shafarman W N, Huang R S and Stephens S H 2006 Characterization of Cu(In,Ga)Se₂ solar cells using etched absorber layers *2006 IEEE 4th World Conf. on Photovoltaic Energy Conf.* pp 420–3
- [27] Larsen J K, Simchi H, Xin P, Kim K and Shafarman W N 2014 Backwall superstrate configuration for ultrathin Cu(In,Ga)Se₂ solar cells *Appl. Phys. Lett.* **104** 033901
- [28] Ramanathan K, Noufi R, To B, Young D I, Bhattacharya R, Contreras M A, Dhare R G and Teeter G 2006 Processing and properties of sub-micron CIGS solar cells *2006 IEEE 4th World Conf. on Photovoltaic Energy Conf.* pp 380–3
- [29] Lundberg O, Bodegård M, Malmström J and Stolt L 2003 Influence of the Cu(In,Ga)Se₂ thickness and Ga grading on solar cell performance *Prog. Photovolt., Res. Appl.* **11** 77–88
- [30] Pettersson J, Törndahl T, Platzer-Björkman C, Hultqvist A and Edoff M 2013 The influence of absorber thickness on Cu(In,Ga)Se₂ solar cells with different buffer layers *IEEE J. Photovolt.* **3** 1376–82
- [31] Gloeckler M and Sites J R 2005 Potential of submicrometer thickness Cu(In,Ga)Se₂ solar cells *J. Appl. Phys.* **98** 103703
- [32] Jehl Z *et al* 2011 Thinning of CIGS solar cells: II. Cell characterizations *Thin Solid Films* **519** 7212–5
- [33] Jehl Li-Kao Z, Naghavi N, Erfurth F, Guillemoles J F, Gérard I, Etcheberry A, Pelouard J L, Collin S, Voorwinden G and Lincot D 2012 Towards ultrathin copper indium gallium diselenide solar cells: proof of concept study by chemical etching and gold back contact engineering *Prog. Photovolt., Res. Appl.* **20** 582–7
- [34] Kim K, Park H, Kim W K, Hanket G M and Shafarman W N 2013 Effect of reduced Cu(In,Ga)(SeS)₂ thickness using three-step H₂Se/Ar/H₂S Reaction of Cu–In–Ga metal precursor *IEEE J. Photovolt.* **3** 446–50
- [35] Yin G, Brackmann V, Hoffmann V and Schmid M 2015 Enhanced performance of ultra-thin Cu(In,Ga)Se₂ solar cells deposited at low process temperature *Sol. Energy Mater. Sol. Cells* **132** 142–7
- [36] van Lare C, Yin G, Polman A and Schmid M 2015 Light coupling and trapping in ultrathin Cu(In,Ga)Se₂ solar cells using dielectric scattering patterns *ACS Nano* **9** 9603–13

- [37] Stuart H R and Hall D G 1998 Island size effects in nanoparticle-enhanced photodetectors *Appl. Phys. Lett.* **73** 3815–7
- [38] Morawiec S, Mendes M J, Mirabella S, Simone F, Priolo F and Crupi I 2013 Self-assembled silver nanoparticles for plasmon-enhanced solar cell back reflectors: correlation between structural and optical properties *Nanotechnology* **24** 265601
- [39] Pillai S, Catchpole K R, Trupke T and Green M A 2007 Surface plasmon enhanced silicon solar cells *J. Appl. Phys.* **101** 093105
- [40] Frens G 1973 Controlled nucleation for the regulation of the particle size in monodisperse gold suspensions *Nat. Phys. Sci.* **241** 20–2
- [41] Jana N R, Gearheart L and Murphy C J 2001 Wet chemical synthesis of silver nanorods and nanowires of controllable aspect ratio *Chem. Commun.* 617–8
- [42] Brown K R, Walter D G and Natan M J 2000 Seeding of Colloidal Au Nanoparticle solution:II. Improved control of particle size and shape *Chem. Mater.* **12** 306–13
- [43] Mulvaney P, Liz-Marzan L M, Giersig M and Ung T 2000 Silica encapsulation of quantum dots and metal clusters *J. Mater. Chem.* **10** 1259–70
- [44] Liu Y, Fu Y, Ditttrich T, Sáez-Araoz R, Schmid M, Hinrichs V, Lux-Steiner M C and Fischer C-H 2015 Phase transitions during formation of Ag nanoparticles on In_2S_3 precursor layers *Thin Solid Films* **590** 54–9
- [45] Fu Y, Sáez-Araoz R, Köhler T, Krüger M, Steigert A, Lauermaun I, Lux-Steiner M C and Fischer C-H 2013 Spray-ILGAR ZnS nanodots/ In_2S_3 as defect passivation/point contact bilayer buffer for $\text{Cu}(\text{In,Ga})(\text{S,Se})_2$ solar cells *Solar Energy Mater. Solar Cells* **117** 293–9
- [46] Liu Y *et al* 2016 Size and density controlled deposition of Ag nanoparticle films by a novel low temperature spray chemical vapor deposition method—research into mechanism and particle growth *submitted*
- [47] Sakai N, Fujiwara Y, Takahashi Y and Tatsuma T 2009 Plasmon-resonance-based generation of cathodic photocurrent at electrodeposited gold nanoparticles coated with TiO_2 films *ChemPhysChem* **10** 766–9
- [48] Ludwig W, Ohm W, Correa-Hoyos J-M, Zhao Y, Lux-Steiner M C and Gledhill S 2013 Electrodeposition parameters for ZnO nanorod arrays for photovoltaic applications *Phys. Status Solidi a* **210** 1557–63
- [49] Ohm W *et al* 2015 An overview of technological aspects of $\text{Cu}(\text{In,Ga})\text{Se}_2$ solar cell architectures incorporating ZnO nanorod arrays *Phys. Status Solidi a* **212** 76–87
- [50] Yang S M, Jang S G, Choi D G, Kim S and Yu H K 2006 Nanomachining by colloidal lithography *Small* **2** 458–75
- [51] Hawker C J and Russell T P 2011 Block Copolymer Lithography: merging ‘bottom-up’ with ‘top-down’ processes *MRS Bull.* **30** 952–66
- [52] Höflich K, Yang R B, Berger A, Leuchs G and Christiansen S 2011 The direct writing of plasmonic gold nanostructures by electron-beam-induced deposition *Adv. Mater.* **23** 2657–61
- [53] Chou S Y, Krauss P R and Renstrom P J 1996 Imprint Lithography with 25-Nanometer resolution *Science* **272** 85–7
- [54] Guo L J 2007 Nanoimprint Lithography: methods and material requirements *Adv. Mater.* **19** 495–513
- [55] Andreani L C, Kowalczewski P A, Mura C I, Patrini M, Acciarri M, Binetti S, Sassella A and Marchionna S 2012 Towards CIGS solar cells with reduced film thickness: a study of optical properties and of photonic structures for light trapping *27th European Photovoltaic Solar Energy Conf. and Exhibition* pp 2334–7
- [56] Hwang S and Jang J-H 2012 3D simulations for the optimization of antireflection subwavelength structures in CIGS solar cells *2012 38th IEEE Photovoltaic Specialists Conf. (PVSC)* pp 000864–7
- [57] Onwudinanti C, Vismara R, Isabella O, Grenet L, Emieux F and Zeman M 2016 Advanced light management based on periodic textures for $\text{Cu}(\text{In,Ga})\text{Se}_2$ thin-film solar cells *Opt. Express* **24** A693–707
- [58] Liao Y-K *et al* 2013 Non-antireflective scheme for efficiency enhancement of $\text{Cu}(\text{In,Ga})\text{Se}_2$ nanotip array solar cells *ACS Nano* **7** 7318–29
- [59] Liu C-H *et al* 2011 Large scale single-crystal $\text{Cu}(\text{In,Ga})\text{Se}_2$ nanotip arrays for high efficiency solar cell *Nano Lett.* **11** 4443–8
- [60] Wang Y-C, Cheng H-Y, Yen Y-T, Wu T-T, Hsu C-H, Tsai H-W, Shen C-H, Shieh J-M and Chueh Y-L 2015 Large-scale micro- and nanopatterns of $\text{Cu}(\text{In,Ga})\text{Se}_2$ thin film solar cells by mold-assisted chemical-etching process *ACS Nano* **9** 3907–16
- [61] Wang W, Wu S, Knize R J, Reinhardt K, Lu Y and Chen S 2012 Enhanced photon absorption and carrier generation in nanowire solar cells *Opt. Express* **20** 3733–43
- [62] Le D, Tran Q, Lee S and Kim S 2014 Ultra broadband absorption of SPPs enhanced dual grating thin film CIGS solar cell enabled by particle swarm optimization *J. Opt. Soc. Korea* **18** 429–35
- [63] Colin C *et al* 2012 Broadband light trapping in ultra-thin nanostructured $\text{Cu}(\text{In,Ga})\text{Se}_2$ solar cells *27th European Photovoltaic Solar Energy Conf. and Exhibition* pp 2244–8
- [64] Jeng M-J, Chen Z-Y, Xiao Y-L, Chang L-B, Ao J, Sun Y, Popko E, Jacak W and Chow L 2015 Improving efficiency of Multicrystalline Silicon and CIGS solar cells by incorporating metal nanoparticles *Materials* **8** 6761–71
- [65] Park S-U, Sharma R, Sim J-K, Baek B J, Ahn H-K, Kim J S and Lee C-R 2013 Development of gold induced surface plasmon enhanced CIGS absorption layer on polyimide substrate *Appl. Surf. Sci.* **280** 757–63
- [66] Londhe P U, Rohom A B and Chaure N B 2016 Improvement in the CIGS solar cell parameters by using plasmonic (Au) nanoparticle *Nanosci. Nanotechnol.* **6** 43–6
- [67] Chen S-C *et al* 2014 Toward omnidirectional light absorption by plasmonic effect for high-efficiency flexible nonvacuum $\text{Cu}(\text{In,Ga})\text{Se}_2$ thin film solar cells *ACS Nano* **8** 9341–8
- [68] Schmid M, Klenk R, Lux-Steiner M C, Topic M and Krc J 2011 Modeling plasmonic scattering combined with thin-film optics *Nanotechnology* **22** 025204
- [69] Schmid M, Klaer J, Klenk R, Topić M and Krč J 2013 Stability of plasmonic metal nanoparticles integrated in the back contact of ultra-thin $\text{Cu}(\text{In,Ga})\text{S}_2$ solar cells *Thin Solid Films* **527** 308–13
- [70] Yin G, Steigert A, Andrae P, Goebelt M, Latzel M, Manley P, Lauermaun I, Christiansen S and Schmid M 2015 Integration of plasmonic Ag nanoparticles as a back reflector in ultra-thin $\text{Cu}(\text{In,Ga})\text{Se}_2$ solar cells *Appl. Surf. Sci.* **355** 800–4
- [71] Goffard J, Cattoni A, Mollica F, Jubault M, Colin C, Guillemoles J F, Lincot D, Naghavi N and Collin S 2015 Nanostructured back mirror for ultra-thin CIGS solar cell *EU PVSEC (Hamburg)* (<https://doi.org/10.4229/EUPVSEC20152015-3BO.7.1>)
- [72] Grandidier J, Weitekamp R A, Deceglie M G, Callahan D M, Battaglia C, Bukowsky C R, Ballif C, Grubbs R H and Atwater H A 2013 Solar cell efficiency enhancement via light trapping in printable resonant dielectric nanosphere arrays *Phys. Status Solidi a* **210** 255–60
- [73] Yin G, Manley P and Schmid M 2016 Light absorption enhancement for ultra-thin $\text{Cu}(\text{In}_{1-x}\text{Ga}_x)\text{Se}_2$ solar cells using closely packed 2D SiO_2 nanosphere arrays *Sol. Energy Mater. Sol. Cells* **153** 124–30
- [74] Aé L, Kieven D, Chen J, Klenk R, Rissom T, Tang Y and Lux-Steiner M C 2010 ZnO nanorod arrays as an antireflective coating for $\text{Cu}(\text{In,Ga})\text{Se}_2$ thin film solar cells *Prog. Photovolt., Res. Appl.* **18** 209–13

- [75] Yin G, Knight M W, van Lare M-C, Solà Garcia M M, Polman A and Schmid M 2016 Opto-electronic enhancement of ultrathin $\text{CuIn}_{1-x}\text{Ga}_x\text{Se}_2$ solar cells by nanophotonic contacts *Adv. Opt. Mater.* (<https://doi.org/10.1002/adom.201600637>)
- [76] Jackson P, Hariskos D, Wuerz R, Kiowski O, Bauer A, Friedlmeier T M and Powalla M 2015 Properties of Cu(In,Ga)Se_2 solar cells with new record efficiencies up to 21.7% *Phys. Status Solidi RRL* **9** 28–31
- [77] Schmid M, Yin G, Song M, Duan S, Heidmann B, Sancho-Martinez D, Kämmer S, Köhler T, Manley P and Lux-Steiner M C 2016 Concentrating light in Cu(In,Ga)Se_2 solar cells *Proc. SPIE* **9937** 993703
- [78] Yin G, Song M, Duan S, Manley P, Greiner D, Kaufmann C and Schmid M 2016 Well-controlled dielectric nanomeshes by colloidal nanosphere lithography for optoelectronic enhancement of ultrathin Cu(In,Ga)Se_2 solar cells *ACS Appl. Mater. Interfaces* **8** 31648
- [79] Schmid M, van Lare M-C, Yin G and Polman A 2016 Unerschöpfliche Energie—Lichtfänger für ultra-dünne Cu(In,Ga)Se_2 -Solarzellen *GIT Labor-Fachzeitschrift* **2** 36–8
- [80] Vermang B, Fjällström V, Pettersson J, Salomé P and Edoff M 2013 Development of rear surface passivated Cu(In,Ga)Se_2 thin film solar cells with nano-sized local rear point contacts *Sol. Energy Mater. Sol. Cells* **117** 505–11
- [81] Vermang B, Watjen J T, Fjällström V, Rostvall F, Edoff M, Kotipalli R, Henry F and Flandre D 2014 Employing Si solar cell technology to increase efficiency of ultra-thin Cu(In,Ga)Se_2 solar cells *Prog. Photovolt., Res. Appl.* **22** 1023–9
- [82] Vermang B *et al* 2015 Highly reflective rear surface passivation design for ultra-thin Cu(In,Ga)Se_2 solar cells *Thin Solid Films* **582** 300–3
- [83] Casper P, Hünig R, Gomard G, Kiowski O, Reitz C, Lemmer U, Powalla M and Hetterich M 2016 Optoelectrical improvement of ultra-thin Cu(In,Ga)Se_2 solar cells through microstructured MgF_2 and Al_2O_3 back contact passivation layer *Phys. Status Solidi RRL* **10** 376–80
- [84] Allsop N, Nürnberg R, Lux-Steiner M C and Schedel-Niedrig T 2009 Three-dimensional simulations of a thin film heterojunction solar cell with a point contact/defect passivation structure at the heterointerface *Appl. Phys. Lett.* **95** 122108–10
- [85] Reinhard P, Bissig B, Pianezzi F, Hagendorfer H, Sozzi G, Menozzi R, Gretener C, Nishiwaki S, Buecheler S and Tiwari A N 2015 Alkali-templated surface nanopatterning of chalcogenide thin films: a novel approach toward solar cells with enhanced efficiency *Nano Lett.* **15** 3334–40