

Open-Minded

Located in the heart of the Ruhr metropolis, the University of Duisburg-Essen (UDE) is one of the largest universities in Germany. Its broad spectrum of subjects ranges from the humanities, social sciences and education to economics, engineering, natural sciences and medicine.

Since its foundation in 2003, the UDE has evolved into a world-renowned university for research – a fact documented by several top positions: In the Times Higher Education-Ranking it takes the 16th place among the world’s 200 best young universities and ranks first among the German universities evaluated. The UDE is also way ahead in the cited scientific publications: It ranks 5th nationwide and 114rd in an international university comparison.

With its innovative and digitally supported teaching and learning concepts, the UDE is an attractive place for research-based teaching and a model for active educational justice.

More information:  
[www.uni-due.de/en/university](http://www.uni-due.de/en/university)



Address

**University of Duisburg-Essen**  
45117 Essen, Germany, [info@uni-due.de](mailto:info@uni-due.de)

Campus Duisburg	Campus Essen
Forsthausweg 2	Universitätsstr. 2
47057 Duisburg	45141 Essen
Tel.: +49 203 379-1800	Tel.: +49 201 183-4949

**Universitätsklinikum Essen/  
Essen University Hospital**  
Hufelandstr. 55 45147 Essen, Tel.: +49 201 723-0

**Impress**  
Staff Unit to the University Board, Press Office, University of Duisburg-Essen, spring 2019. The reference year for all data (headcounts) as well as for student numbers, graduates and PhDs, household and third-party funds is 2019.

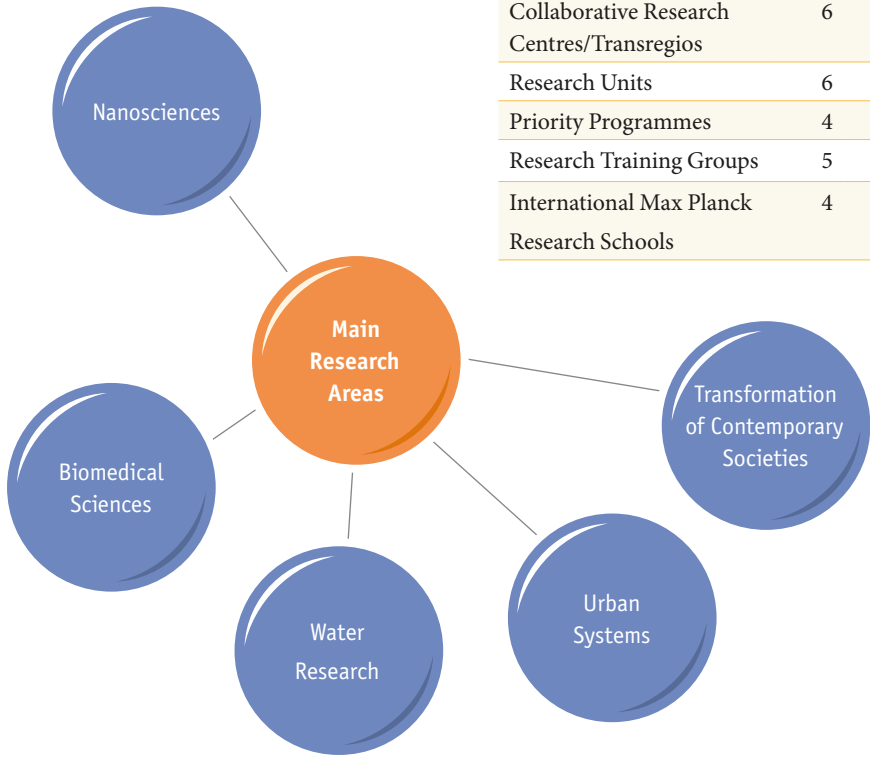


FACTS AND FIGURES  
2020

UNIVERSITÄT  
DUISBURG  
ESSEN  
*Open-Minded*

Research

Main Research Areas



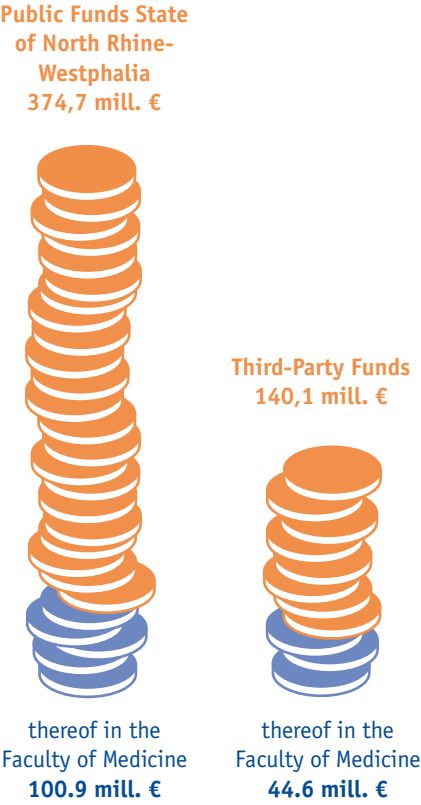
German Research Foundation (DFG)

	Lead Institution	Participating University
Collaborative Research Centres/Transregios	6	18
Research Units	6	17
Priority Programmes	4	36
Research Training Groups	5	9
International Max Planck Research Schools	4	

Research Centres

AREA Ruhr	Alliance for Research on East Asia (together with Ruhr University Bochum)
CENIDE	Center for Nanointegration Duisburg-Essen
EKfG	Essen College of Gender Studies
ELH	Erwin L. Hahn Institute for Magnetic Resonance Imaging (together with University of Nijmegen)
IN-EAST	Institute of East Asian Studies
InZentIM	Interdisciplinary Centre for Integration and Migration Research
IOS	Institute for Optional Studies
IZfB	Interdisciplinary Centre for Educational Research
KHK	Käte Hamburger Kolleg/Centre for Global Cooperation Research
ZLB	Centre for Teacher Education
ZLV	Centre for Logistics and Traffic
ZMB	Centre of Medical Biotechnology
ZWU	Centre for Water and Environmental Research

Budget



Alliances

**University Alliance Ruhr (UA Ruhr)**  
consisting of the Universities of Bochum, Dortmund and Duisburg-Essen with offices in New York and Moscow [www.uaruhr.de](http://www.uaruhr.de)

- Joint Main Research Areas**
- Materials Chain
  - Ruhr Explores Solvation (RESOLV)

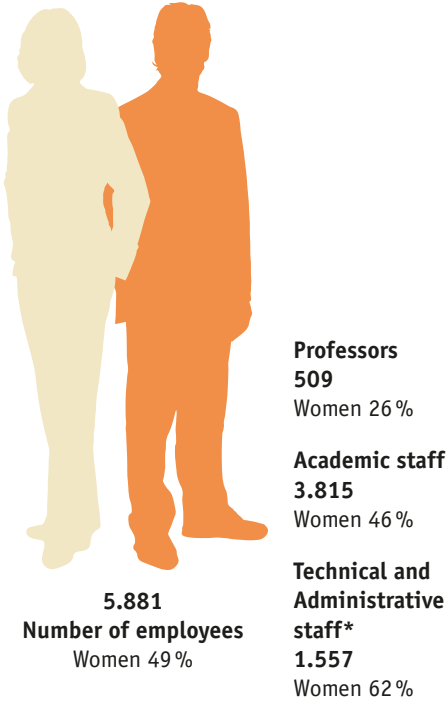
- Joint Research Centres**
- Institute for Advanced Study in the Humanities Essen (KWI)

**Aurora**  
Network of nine European universities, united by the commitment to build a different kind of inclusive university community.  
[www.aurora-network.global](http://www.aurora-network.global)

International cooperations

ERASMUS+	445
Europe including Russian Federation	27
Asia	63
Africa	5
Australia	4
The Americas	42

Staff



\* excl. Medicine

# Faculties – Students – Study opportunities



**Faculty of Humanities**  
**7.777**

- Anglophone Studies
- Christian Studies
- German as a Second Language
- German Studies
- History
- Geography
- Communication Science
- Culture and Economics
- Art and Art Science
- Literature and Media practice
- Dutch Studies
- Philosophy
- Romance Studies (French and Spanish)
- Turkish Studies



**Faculty of Economics and Business Adm.**  
**5.616**

- Applied Computer Science – Systems Engineering
- Economics
- Health Economics
- Health Care Management
- Business Administration
- Computer Science and Economics



**Faculty of Chemistry**  
**1.565**

- Chemistry
- Water Science



**Faculty of Biology**  
**1.604**

- Biology
- Environmental Toxicology
- Medical Biology
- Transnational Ecosystem-based Water Management
- Biodiversity (with Ruhr University Bochum)



**Mercator School of Management**  
**3.035**

- Business Administration
- Business Education
- Innopreneurship



**Faculty of Social Sciences**  
**3.207**

- Global and Transnational Sociology
- Modern East Asian Studies
- Political Science
- Social Sciences
- Sociology



**Faculty of Mathematics**  
**2.993**

- Mathematics
- Technomathematics
- Economathematics



**Faculty of Engineering**  
**11.370**

- Applied Computer Science
- Applied Cognitive and Media Science
- Automotive Engineering and Management
- Civil Engineering
- Electrical Engineering/Information Technology
- International Studies in Engineering (ISE)
- Mechanical Engineering
- Medical Technology
- NanoEngineering
- Technology
- Technical Logistics
- Industrial Engineering



**Faculty of Educational Sciences**  
**2.471**

- Educational Science
- European Adult Education
- Psychology
- Social Work
- Sport and Kinesiology



**Faculty of Physics**  
**889**

- Energy Science
- Physics



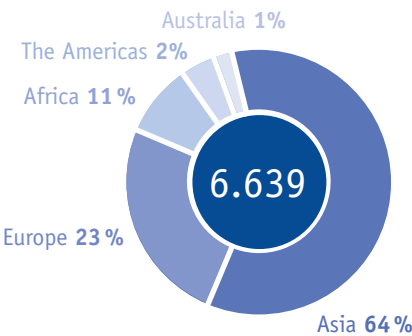
**Faculty of Medicine**  
**2.398**

- Medicine

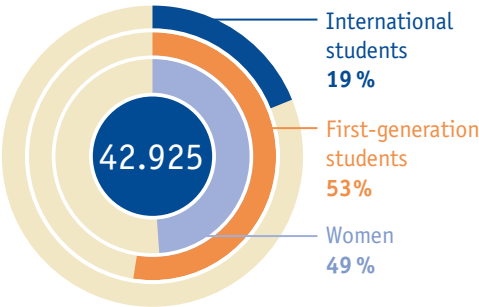
## Students



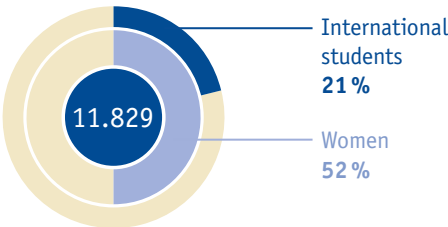
## Students with foreign entrance qualifications



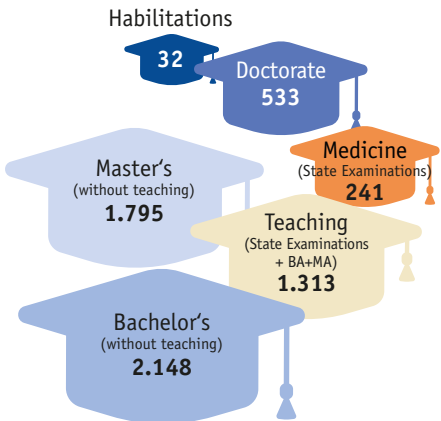
## Students in total



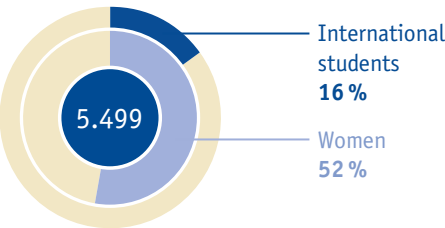
## First-year students



## Degrees



## Graduates



## Doctoral candidates (PhD)

