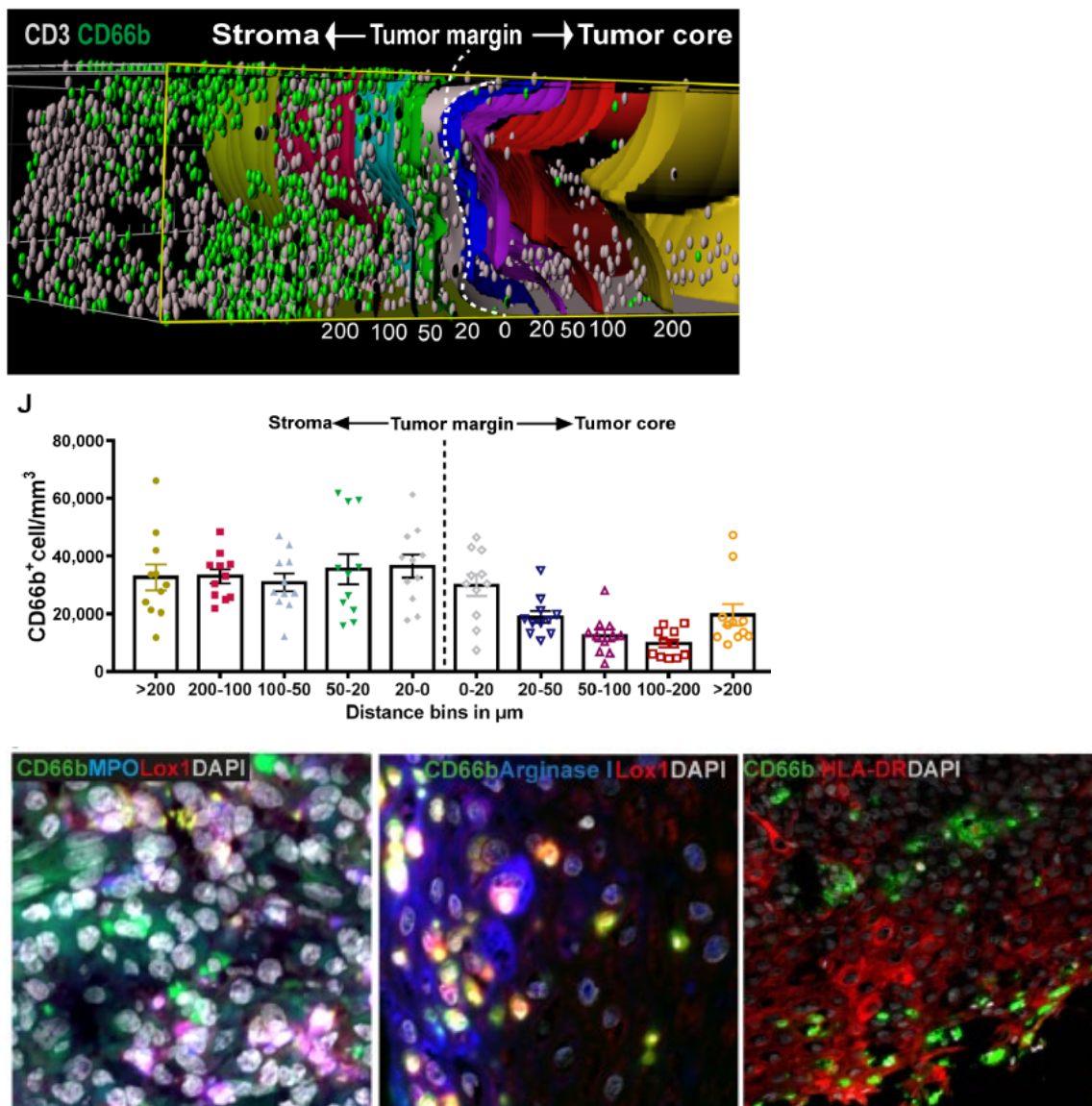


Research project:

Interplay of myeloid cells and T cells in cancer therapy of solid tumors

The immunosuppressive activity on T cells and other types of immune cells is a hallmark of MDSC. Certain subsets of myeloid cells are important mediators of immunosuppression and often limit the efficacy of cancer immunotherapy. We are exploring the functional activities and clinical relevance of the three major human MDSC subsets in head and neck cancer and other solid tumors. Due to close cooperation with our clinicians, we have access to native patient tissue and blood. In a reverse translational approach, we will correlate phenotypes and spatial compositions of myeloid cells and T cells in tumor tissue with outcome and therapeutic response. With digital pathology and investigation of biomarkers we will identify prognostic markers to develop novel combination therapies. Murine tumor models will be used to test this therapy approaches and to develop preclinical models.



See also:

Myeloid Regulatory Cells: Novel Players in Cancer Immunotherapy:

<https://youtu.be/NjIKTSJgaXE>

<http://www.mye-euniter.eu/>



www.cost.eu/cost-action/converting-molecular-profiles-of-myeloid-cells-into-biomarkers-for-inflammation-and-cancer (COST ACTION Mye-InfoBank)



Cassetta L, Bruderek K, Skrzeczynska-Moncznik J, Osiecka O, Hu X, Rundgren IM, Lin A, Santegoets K, Horzum U, Godinho-Santos A, Zelinskyy G, Garcia-Tellez T, Bjelica S, Taciak B, Kittang AO, Höing B, Lang S, Dixon M, Müller V, Utikal JS, Karakoç D, Yilmaz KB, Górka E, Bodnar L, Anastasiou OE, Bourgeois C, Badura R, Kapinska-Mrowiecka M, Gotic M, Ter Laan M, Kers-Rebel E, Król M, Santibañez JF, Müller-Trutwin M, Dittmer U, de Sousa AE, Esendağlı G, Adema G, Loré K, Ersvær E, Umansky V, Pollard JW, Cichy J, Brandau S, (2020) Differential expansion of circulating human MDSC subsets in patients with cancer, infection and inflammation. *J Immunother Cancer*. 2020 Sep; 8(2): e001223

<http://dx.doi.org/10.1136/jitc-2020-001223>

Si Y, Merz SF, Jansen P, Wang B, Bruderek K, Altenhoff P, Mattheis S, Lang S, Gunzer M, Klode J, Squire A, Brandau S, (2019) Multidimensional imaging provides evidence for down-regulation of T cell effector function by MDSC in human cancer tissue. *Sci Immunol*. 4(40),eaaw9159

<https://www.science.org/doi/10.1126/sciimmunol.aaw9159>

Lang, Stephan; Bruderek, Kirsten; Kaspar, Cordelia; Höing, Benedikt; Kanaan, Oliver; Dominas, Nina; Hussain, Timon; Droege, Freya; Eyth, Christian; Hadaschik, Boris; Brandau, Sven Clinical Relevance and Suppressive Capacity of Human Myeloid-Derived Suppressor Cell Subset *Clinical Cancer Research* Vol. 24 (2018) Nr. 19, pp. 4834 - 4844

<https://doi.org/10.1158/1078-0432.ccr-17-3726>